



STREAMKEEPERS
alamedacreek.org



Become an Alameda Creek StreamKeeper

Help the Alameda Creek Alliance monitor fish and habitat.


STREAMKEEPERS

Adopt a section of stream in the Alameda Creek watershed – either along Alameda Creek or one of the tributaries.

You can adopt a section near where you live, or on public land in the upper watershed.



STREAMKEEPERS

- **Get to know your stream section.**
 - **Visit it regularly, during different seasons, and during low and high stream flows.**
- 

STREAMKEEPERS

Become part of a network of Alameda Creek Alliance volunteers monitoring stream sections throughout the watershed.



You are the Alliance's eyes and ears on the creek.

STREAMKEEPEERS

Monitor potentially suitable fish habitat.

When migratory fish enter the creek again, you can monitor in the winter and spring for migrating and spawning steelhead trout, chinook salmon and lamprey.




STREAMKEEPERS

Identify and document any issues, such as pollution or toxic spills, illegal dumping, invasive species, or poaching.



STREAMKEEPERS

You can record your fish, habitat and other observations on a phone app, Survey 123, where the information can be used by scientists and land and water management agencies.



STREAMKEEPERS



The Alliance, partnering with public agencies and California Trout can help you get training to identify native fish, conduct fish spawning and redd surveys, and monitor water quality, fish habitat, aquatic insects, and more!

ArcGIS Survey123



ArcGIS Survey123 is a simple and intuitive form data gathering solution.

**For a link and instructions for ACA volunteers contact
Steven@AlamedaCreek.org**

ArcGIS Survey123



**Download the Survey 123 app
onto your phone.**

**Open the app to
conduct a survey.**



ArcGIS Survey123



Upload your completed survey from the app.

Alameda Creek Alliance - Fish Survey Form



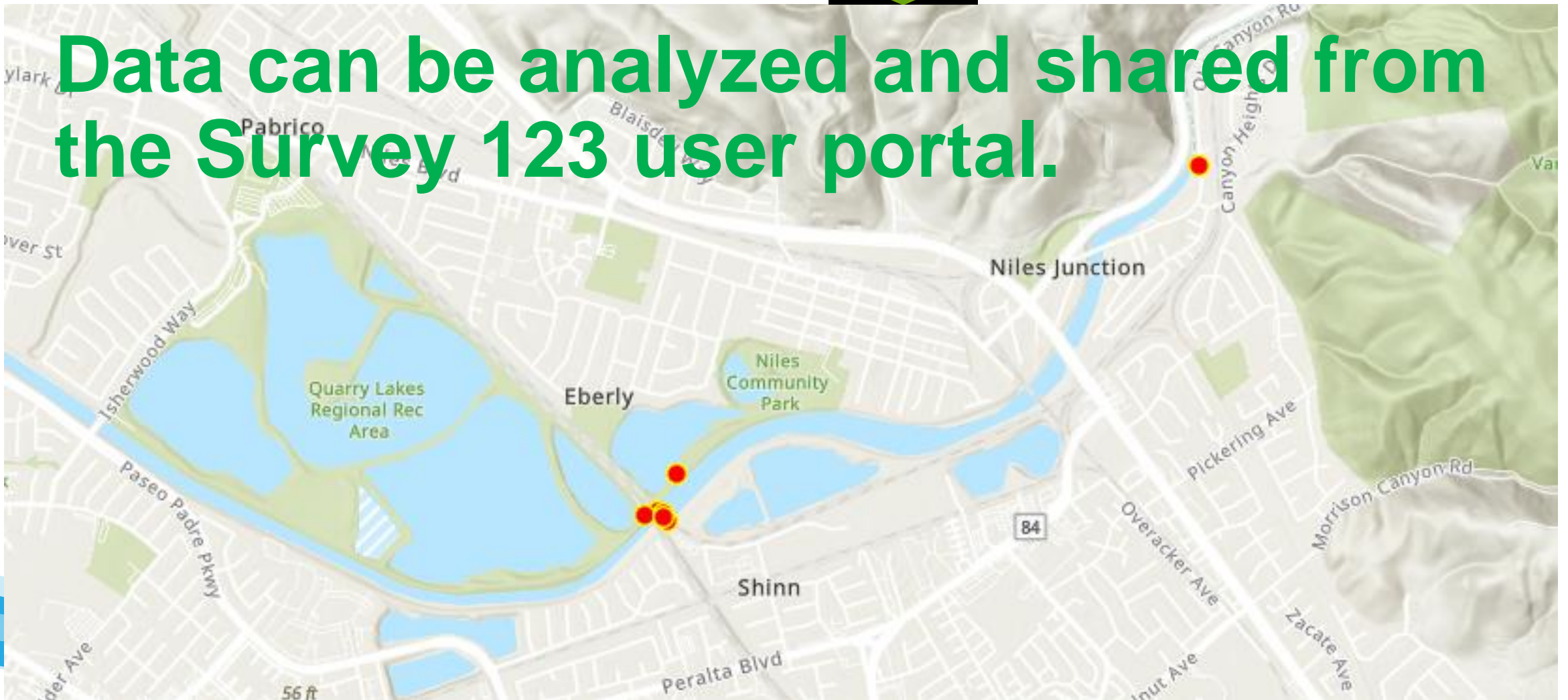
Thank you.
Your response was submitted successfully.

Powered by [ArcGIS Survey123](#)

ArcGIS Survey123



Data can be analyzed and shared from the Survey 123 user portal.



ArcGIS Survey123



**For a link and instructions for ACA
volunteers contact
Steven@AlamedaCreek.org**



Drone Surveys



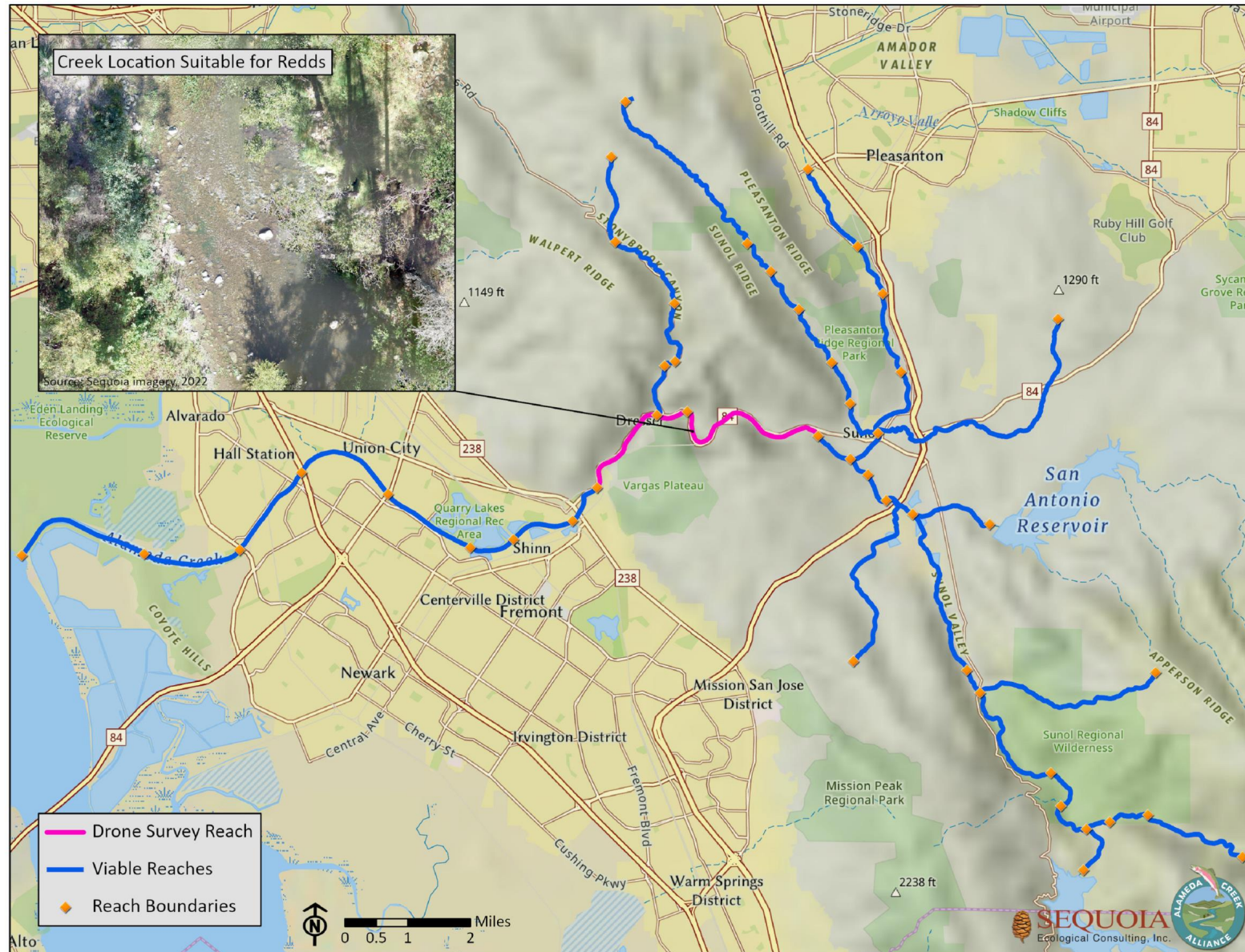
Sequoia Ecological Consulting, Inc. Drone Services

Aerial mapping

3D and 2D Orthophotogrammetry

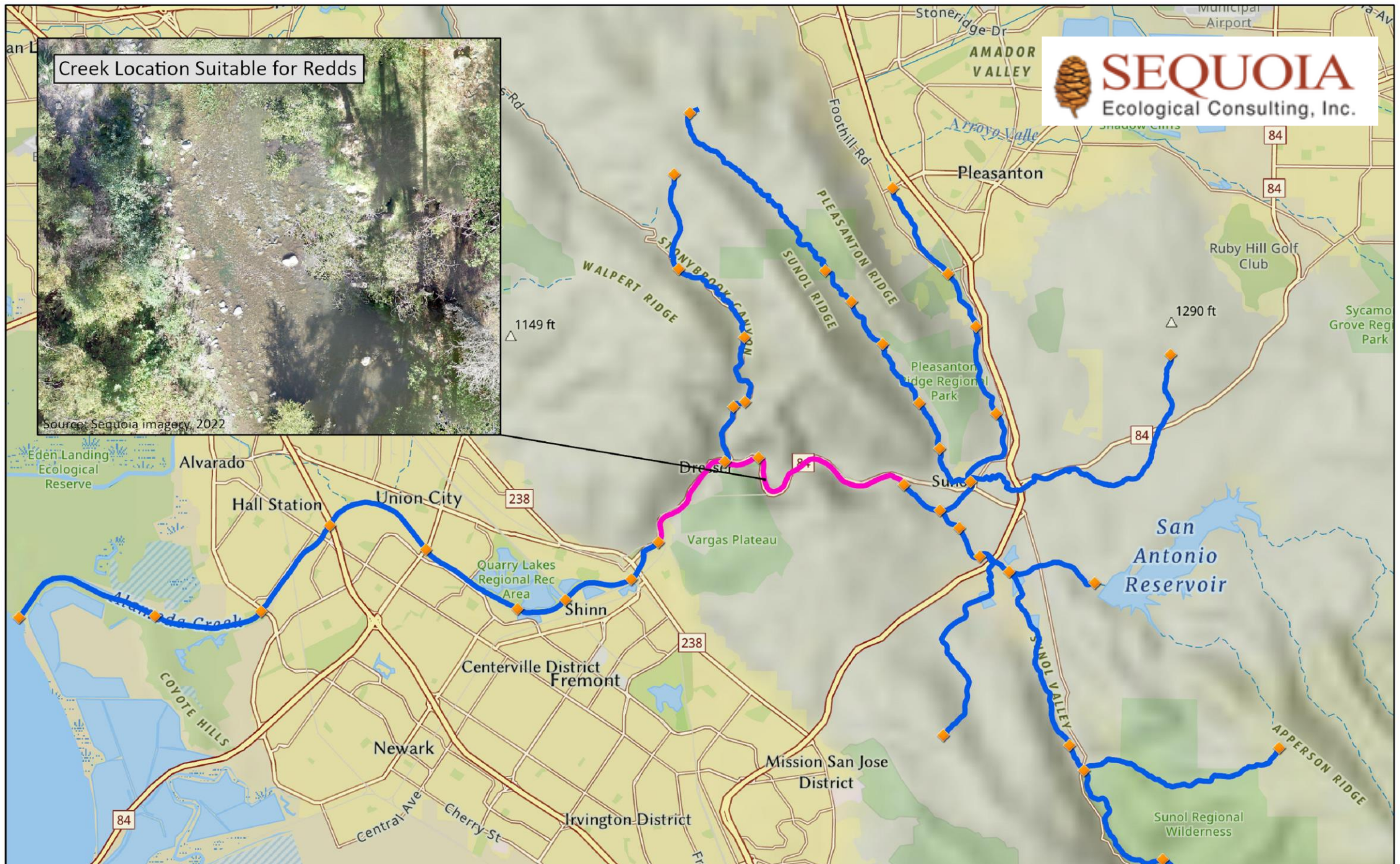
Contour mapping

Drone Surveys



Creek Location Suitable for Redds

Source: Sequoia imagery, 2022



Drone Surveys

