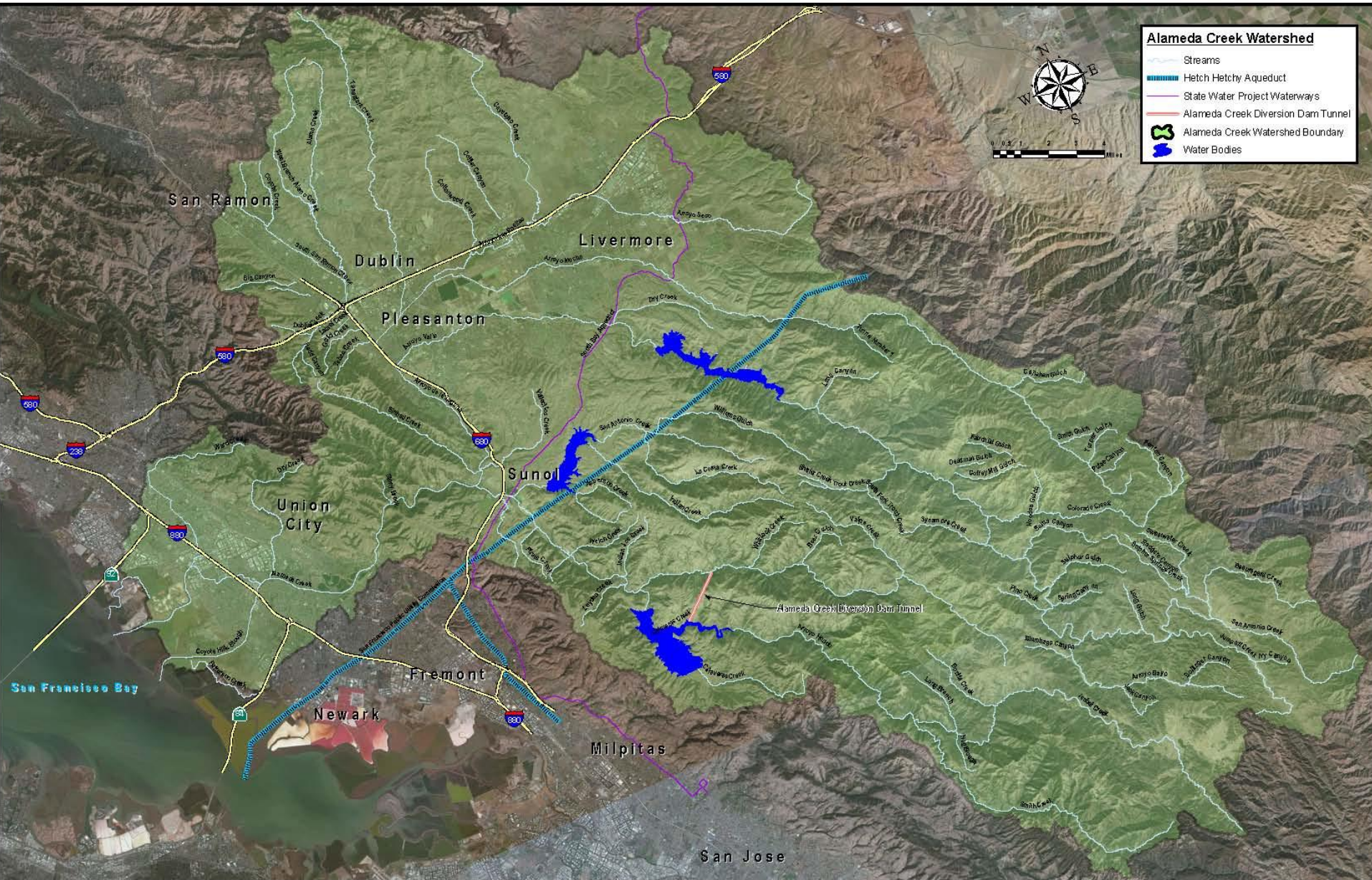


Alameda Creek Restoration 1997-2023



Alameda Creek Watershed



Historical Anadromous Fish Runs



Calaveras Creek early 1920s



Sinbad Creek 1940s



Sinbad Steelhead 1953

Sinbad
Coho?
1950s



Niles Steelhead 1959

Diverse Native Fish

Remaining Native Fish Species

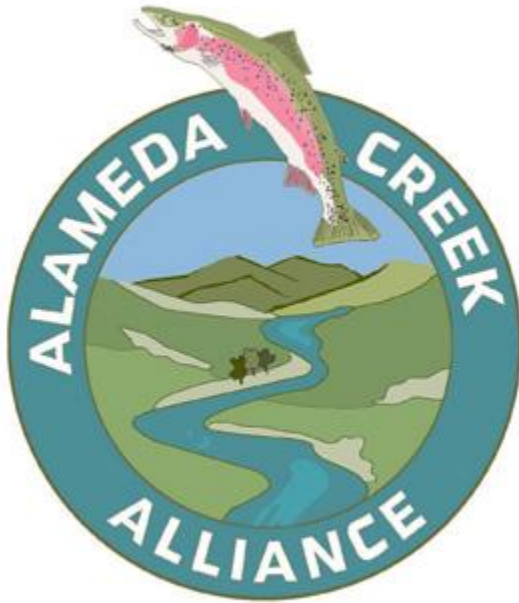
Rainbow/Steelhead Trout
Pacific Lamprey
Brook Lamprey
River Lamprey
California Roach
Hitch
Sacramento Blackfish
Hardhead
Sacramento Pikeminnow
Sacramento Sucker
Three-spined Stickleback
Prickly Sculpin
Tule Perch



Extirpated Species

Coho Salmon
Native Chinook Salmon
Speckled Dace
Riffle Sculpin

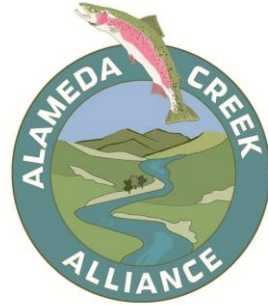
Alameda Creek Alliance



- **Publicity**
- **Outreach**
- **Advocacy**
- **Creek Cleanups**
- **Habitat Restoration**
- **Fish Rescue**
- **StreamKeepers**

25 Years Protecting and Restoring Alameda Creek

Alameda Creek Fisheries Restoration Workgroup



SAN FRANCISCO Public Utilities Commission



US Army Corps
of Engineers



Pacific Gas and
Electric Company®

acgov.org

ACGOV Home | Board of Supervisors | Departments | Services | Employment | Help

PUBLIC WORKS AGENCY

"TO SERVE AND PRESERVE OUR COMMUNITY"



California Environmental Protection Agency
**SAN FRANCISCO BAY REGIONAL
WATER QUALITY CONTROL BOARD**



National Oceanic and Atmospheric Administration

Department of Transportation



Zone 7 Water Agency
Serving the Livermore-Amador Valley

Science Supporting Restoration

An Assessment of the Potential for Restoring a Viable Steelhead Trout Population in the Alameda Creek Watershed

prepared for the

Alameda Creek
Fisheries Restoration Workgroup

by

Andrew J. Gunther
Jeffrey Hagar
Paul Salop

Applied Marine Sciences, Inc.
4749 Bennett Dr., Suite L
Livermore, CA 94550
www.amarine.com

Hagar Environmental Science
6523 Claremont Ave, Suite B
Richmond, CA 94805

February 7, 2000

Population Genetic Structure of Alameda Creek Rainbow/Steelhead Trout - 2002

By

Dr. Jennifer L. Nielsen

US Geological Survey
Alaska Science Center
1011 East Tudor Road
Anchorage, Alaska 99503
(907) 786-3670

Jennifer_Nielsen@usgs.gov

Draft Report Submitted to Hagar Environmental Science January 3, 2003

Fish Rescue





Fish Transport and Release



Steelhead Tagging 1998-2019



Radio Tagged Fish (35)

1998 – 10
1999 – 3
2000 – 1
2001 – 1
2002 – 1
2003 – 3
2005 – 1
2006 – 6
2007 – 1
2008 – 2
2017 – 5
2019 – 1

Radio-tagged steelhead trout in Stonybrook Creek, 2008

Two Decades of Fish Passage Projects



Steelhead at the BART weir – February 19, 2019

Dam Removals



EBRPD Sunol Swim Dams Removed 2001



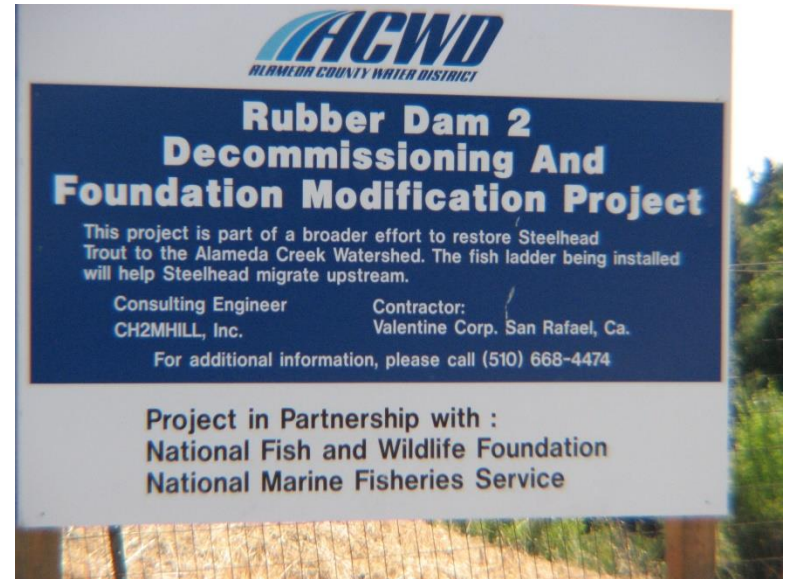
**SFPUC Removed
Niles Dam
2006**





**SFPUC Removed
Sunol Dam
2006**





**ACWD Removed
Lower Rubber Dam
2009**



FISH PASSAGE BARRIER REMOVALS



**LLNL Road Crossing
on Arroyo Mocho
Replaced With Bridge
2004**





**Zone 7 Removed
Castlewood
Drop Structure
Arroyo de la Laguna
2013**



**Zone 7 Removed
Isabel Drop Structures
Arroyo Mocho
2013**



Alameda County Stonybrook Creek Culverts

**Lower Culvert Retrofitted with Baffles
Upper Culvert Replaced with Bridge
2016**



Figure 26. KVP-5 - Existing Condition at Stonybrook Creek Culvert, seen from south of SR-84



Caltrans Fish Passage Stonybrook Creek Completed 2022

Culvert Replaced with Bridge

Niles Canyon Safety Improvements Project

86



Former Road Crossing Sill

FISH LADDERS

**Zone 7
Arroyo Mocho
Arroyo las Positas**



**Creek Realignment
and Fish Ladders
2003**

SFPUC
Alameda Creek Diversion Dam
Fish Ladder Completed 2019



ACWD

Upper Rubber Dam Fish Ladder Completed 2019



ACWD and Alameda County BART Weir and Middle Rubber Dam Fish Ladder





**Critical Fish Ladder
Completed 2021**



FISH SCREENS



**ACWD
Fish Screens in
Lower Creek
Installed 2008,
2010, 2014, 2022**



Calaveras Dam Rebuild Project – Completed 2018



**Calaveras Dam
Cold Water Flow Releases
Began 2020**



**Bypass Flows,
Fish Ladder, and
Fish Screen
at Diversion
Dam**

Fish Passage Progress 1997-2023

Alameda Creek Mainstem

10 barriers removed/remediated

3 more in planning stages

Northern Arroyos

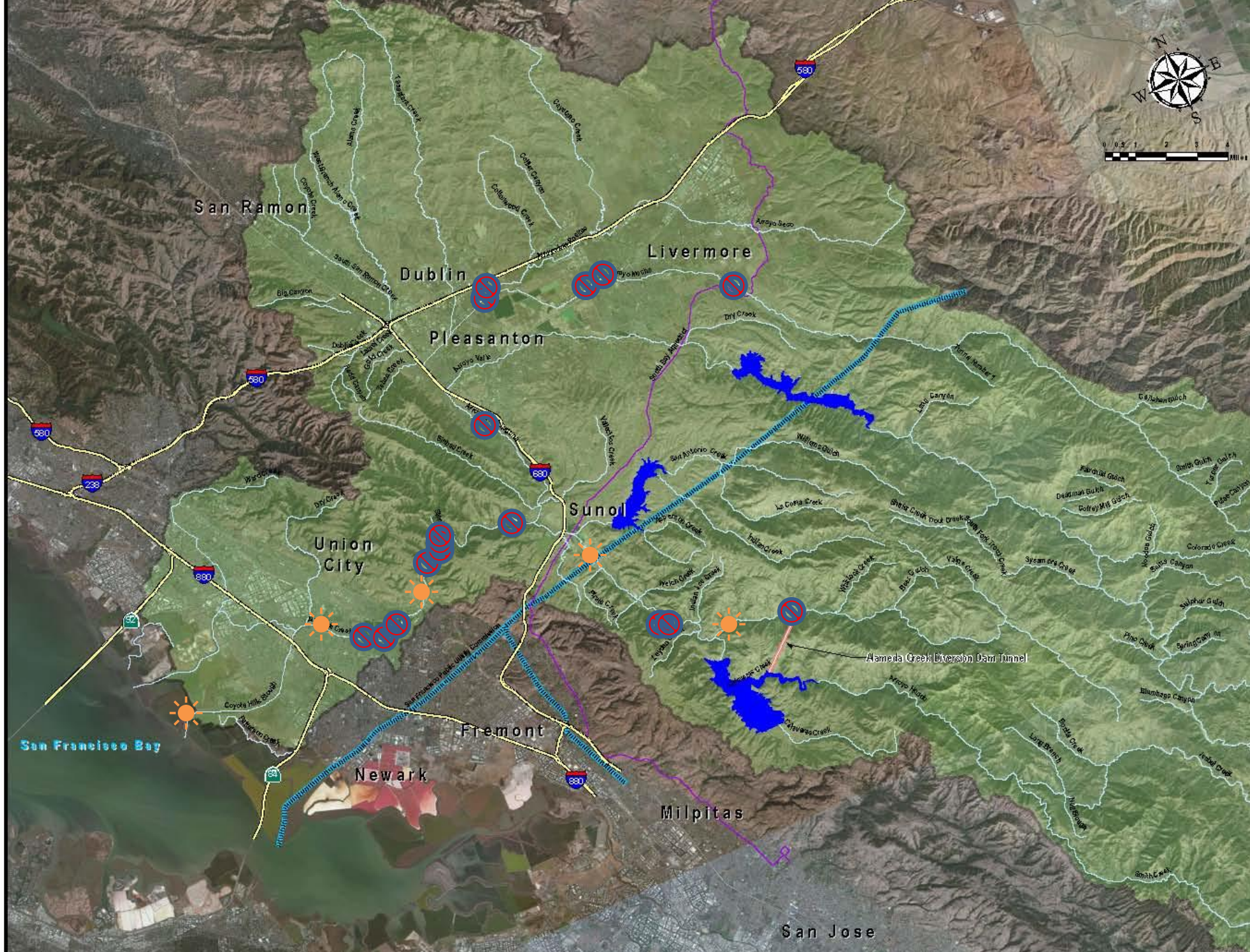
6 barriers removed/laddered

4 more on Zone 7 project list

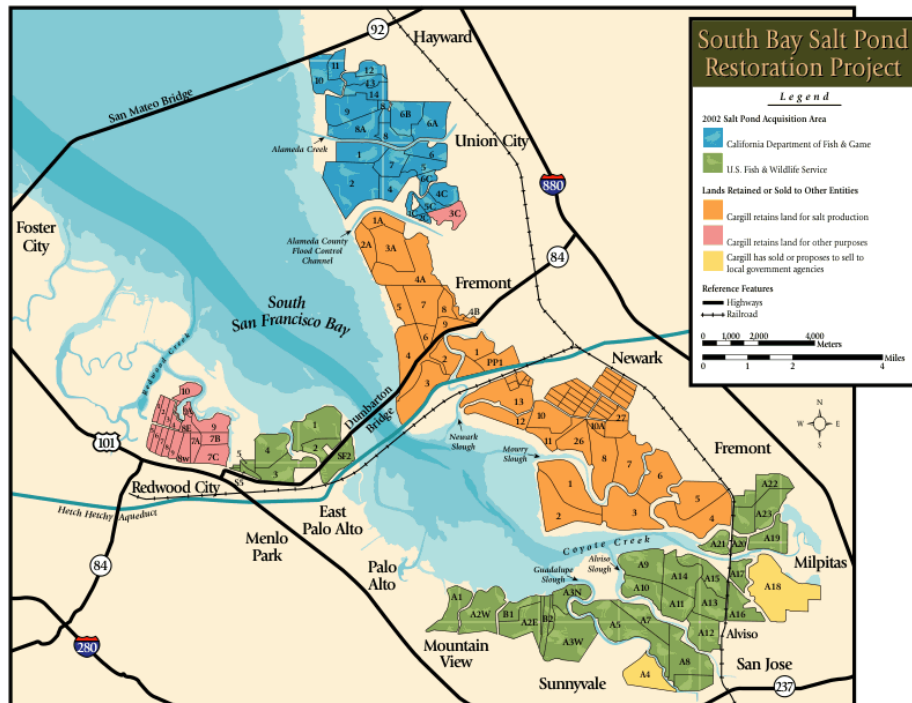
Stonybrook Creek

3 culverts removed/modified

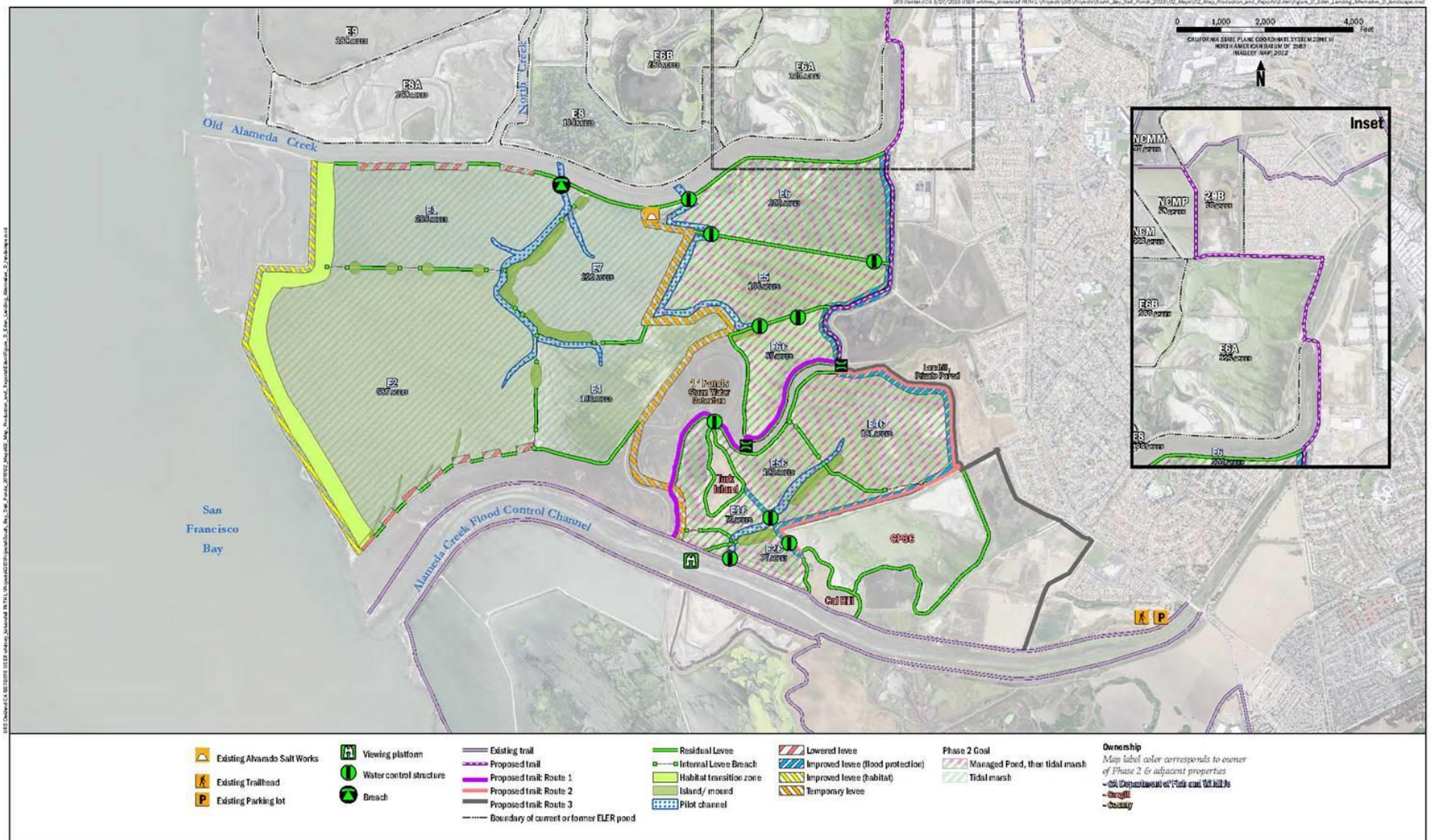
**Several remaining smaller County and private culverts
and road crossings**



Alameda Creek Mouth



Coming Soon: Salt Pond Restoration To Tidal Marsh



Lower Alameda Creek Fish Passage Restoration in Flood Control District Zone 5, Cities of Fremont and Union City, California

DRAFT

Initial Study with Mitigated Negative Declaration/
Environmental Assessment



Alameda County Flood Control Channel Improvement Project from
Ardenwood Boulevard Downstream to BART Weir/RD1 Complex
Upstream, City of Fremont, Alameda County, California

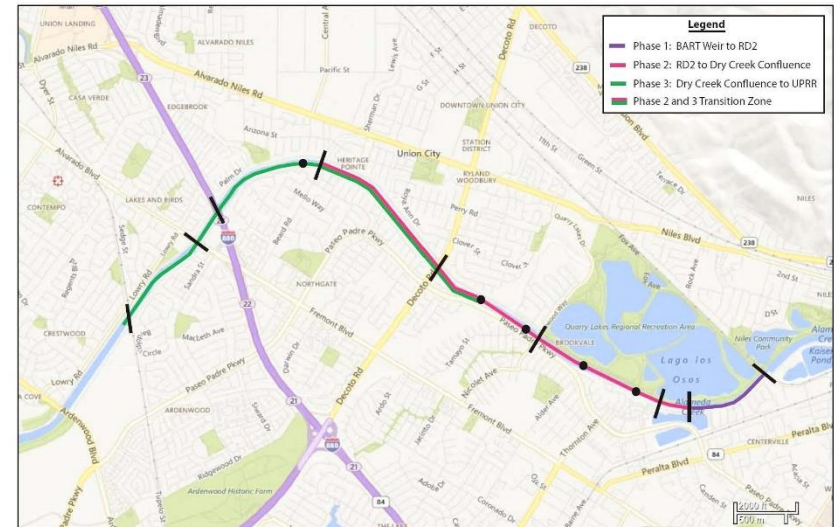


Figure 1. Project Location Map

January 2016

4



&

U.S. Army Corps of Engineers San Francisco District
450 Golden Gate, San Francisco CA 94965

January 30, 2020

Prepared by

Alameda County Flood Control & Water Conservation District
399 Elmhurst Street
Hayward, California 94544-1395

&

Hanson Environmental, Inc.,
446 Green View Court
Walnut Creek, CA 94596

Alameda County Sediment Management and Fish Passage Project in Flood Control Channel



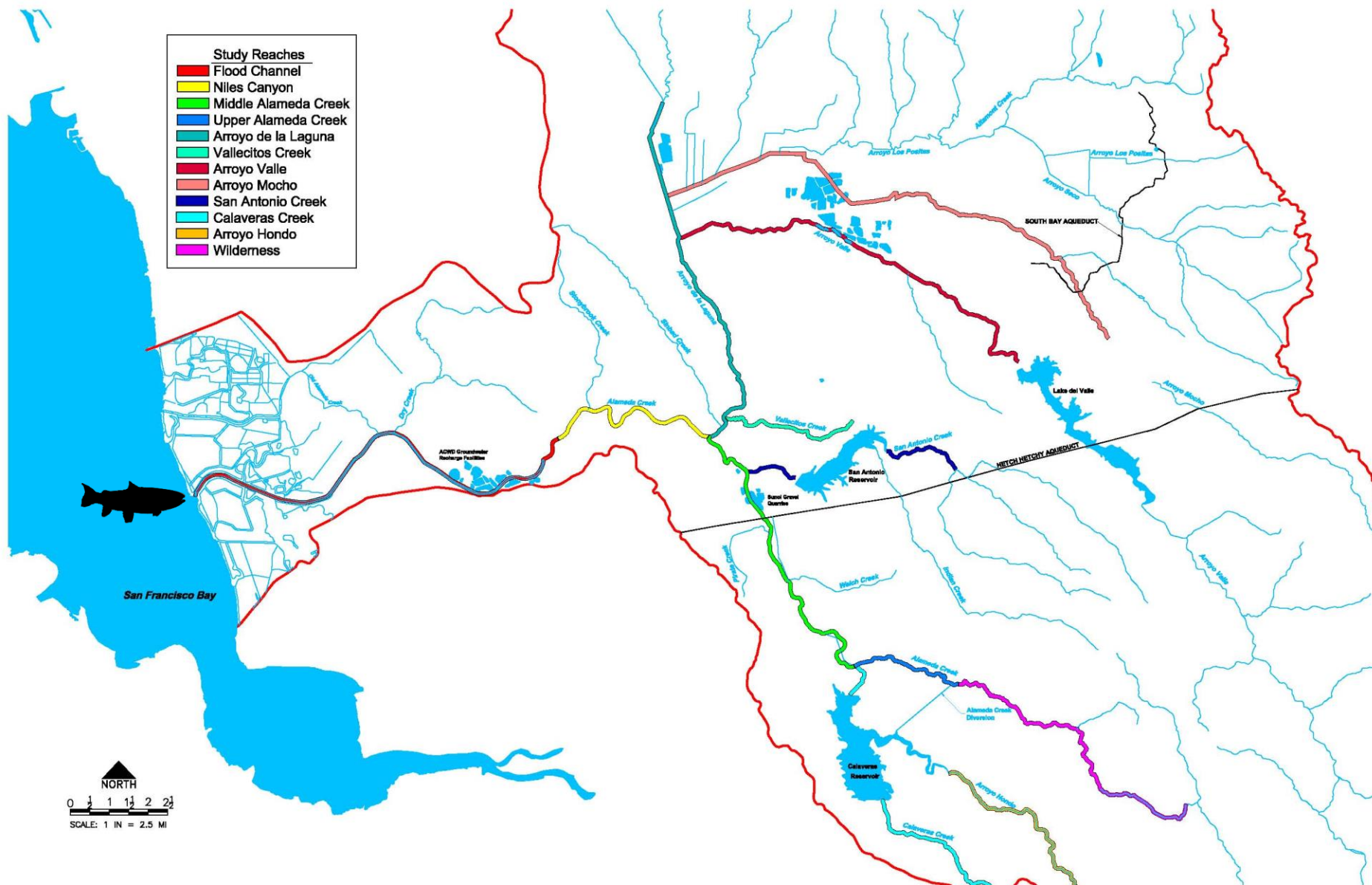
Failing Cement Apron at USGS Gaging Station

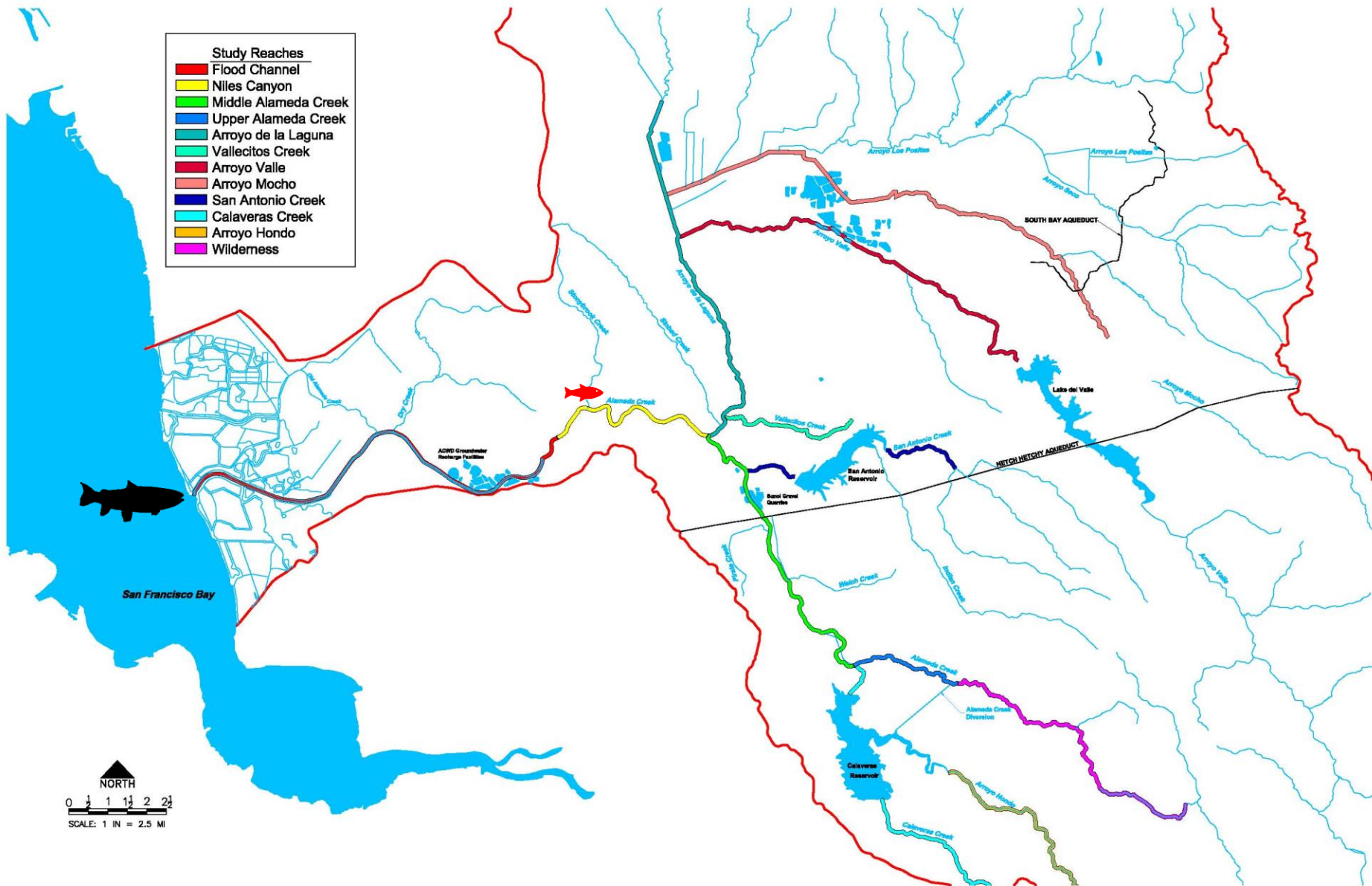


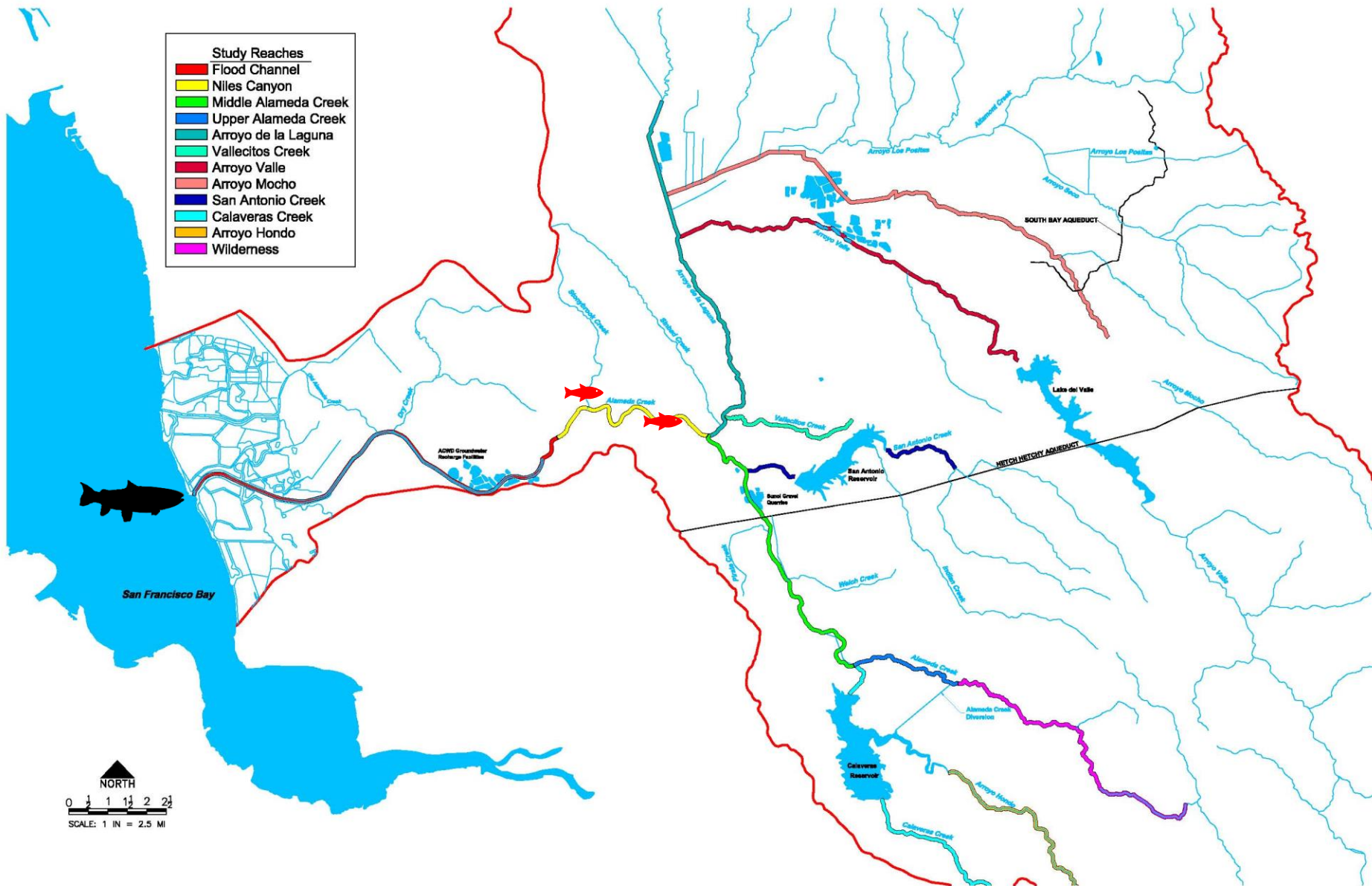
**PG&E Gas Pipeline Crossing
Sunol Valley**

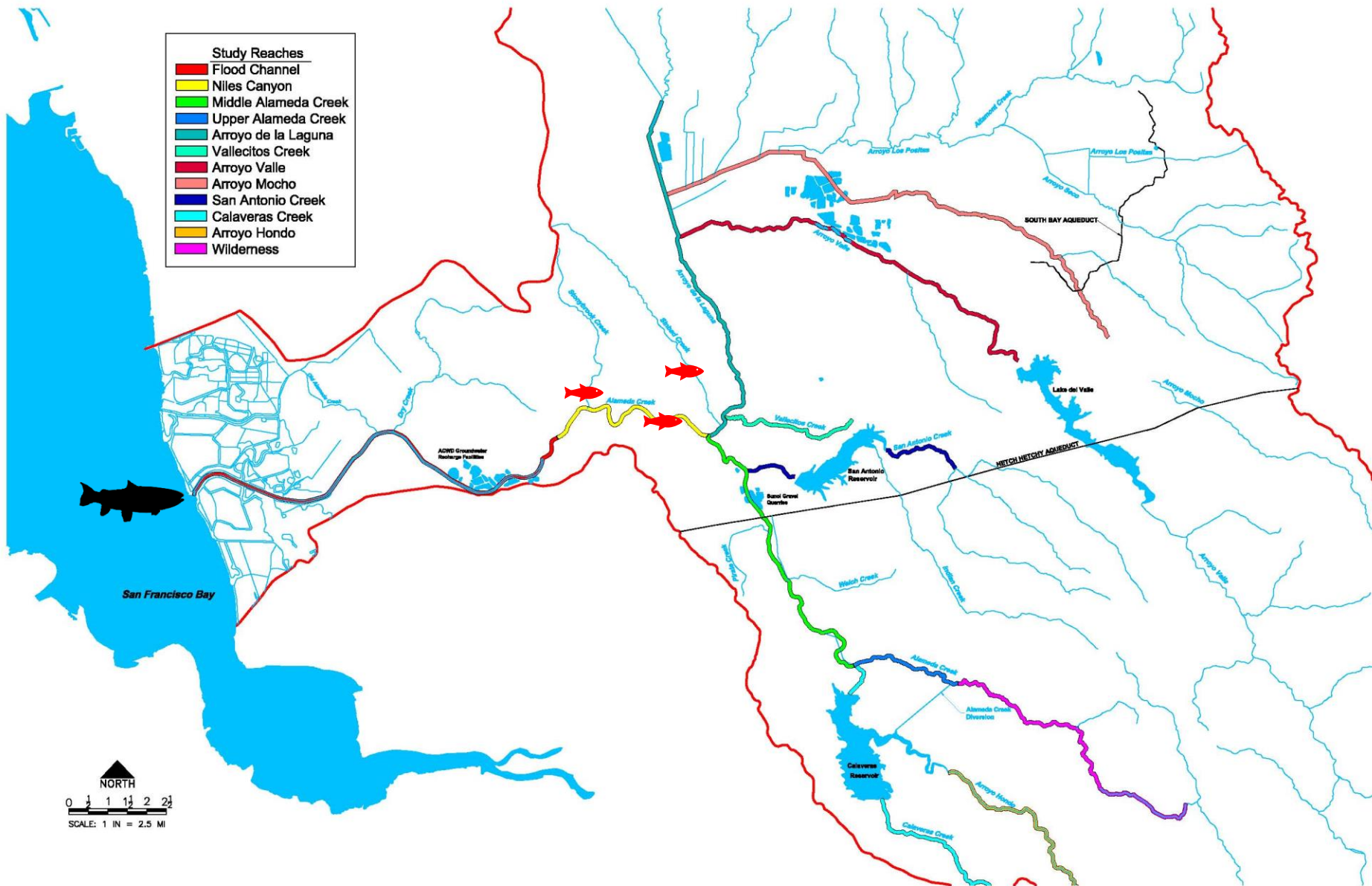
Natural Cascades At Little Yosemite









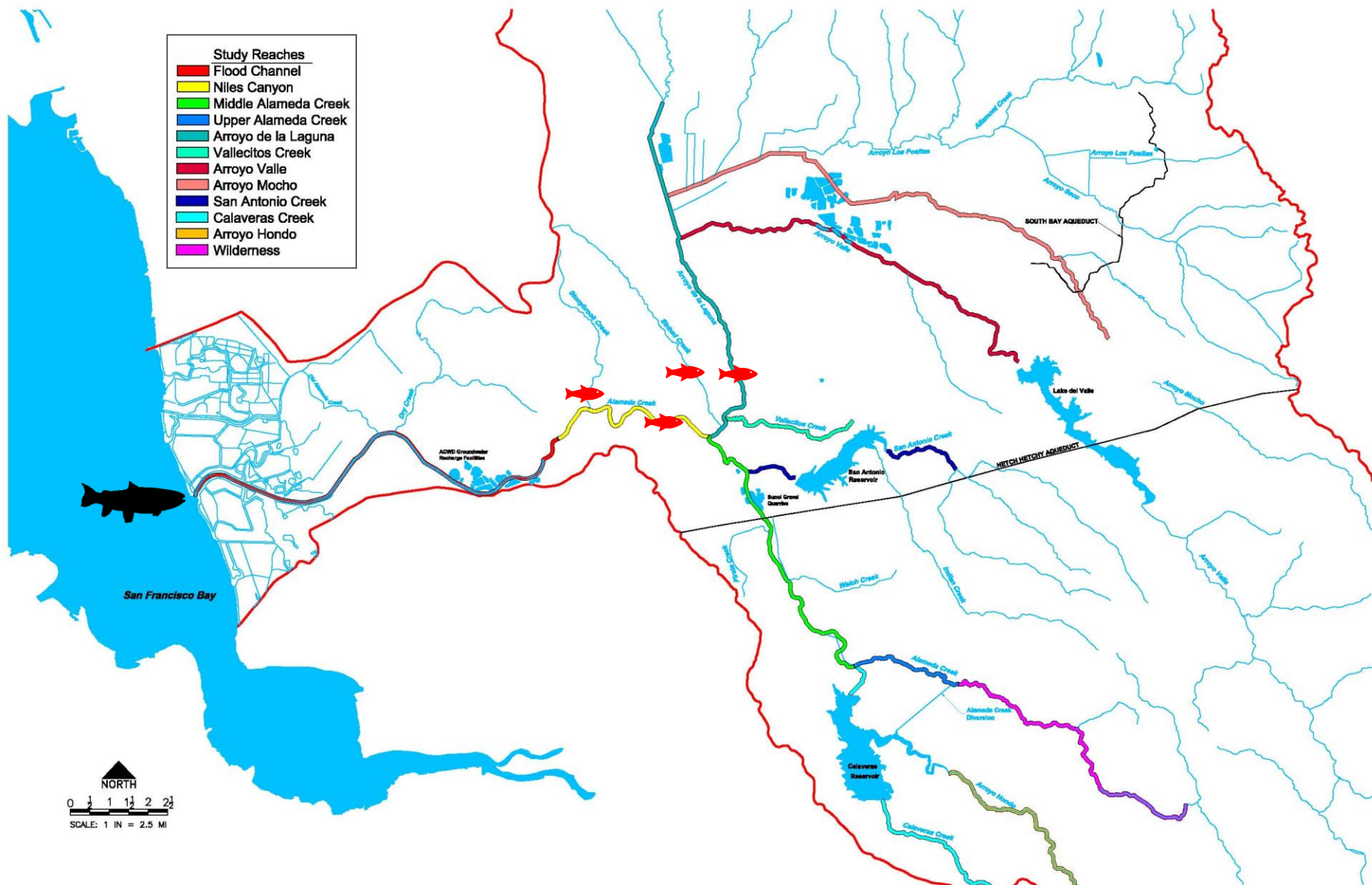


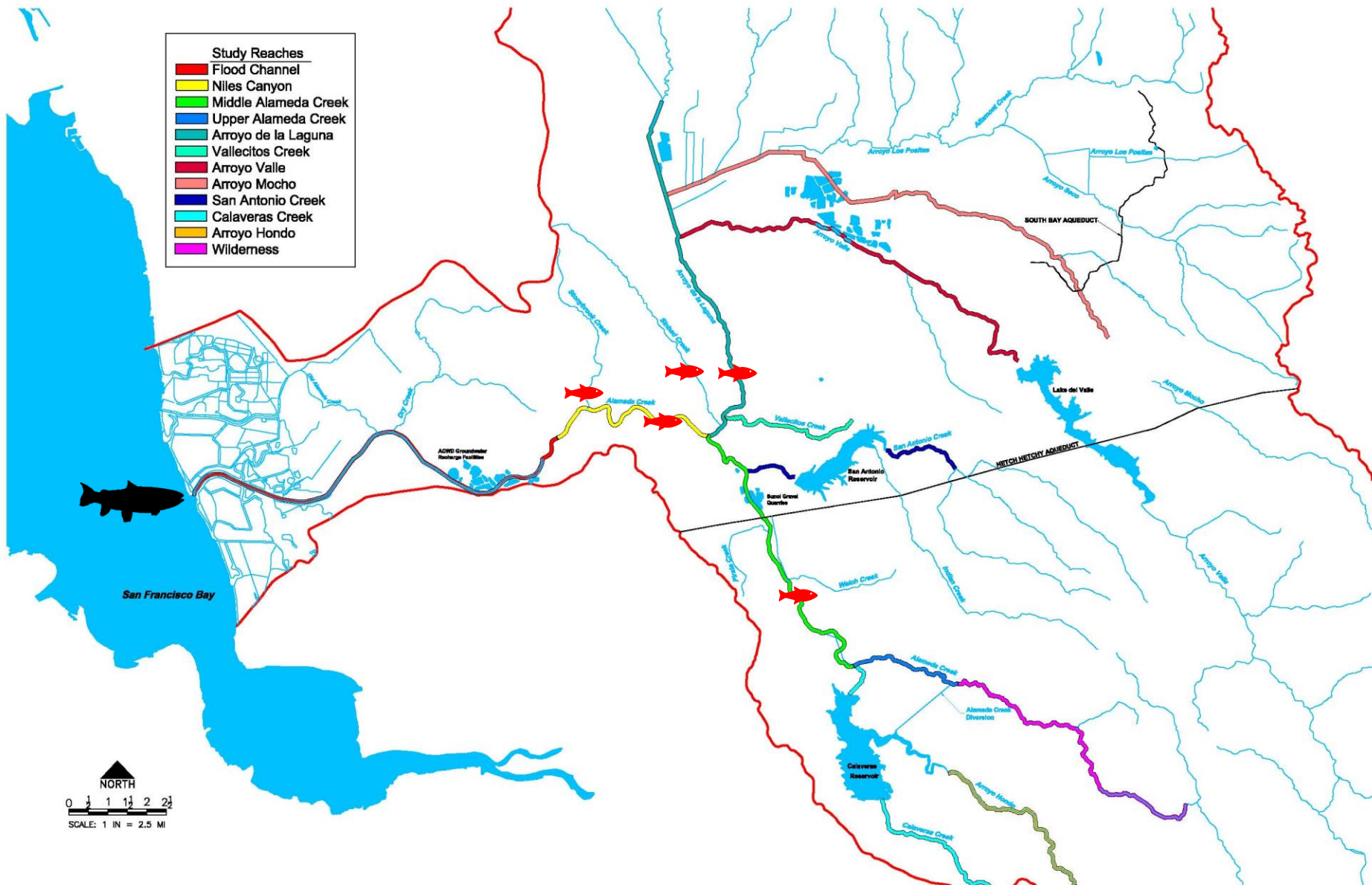
- Study Reaches**
- Flood Channel
 - Niles Canyon
 - Middle Alameda Creek
 - Upper Alameda Creek
 - Arroyo de la Laguna
 - Vallecitos Creek
 - Arroyo Valle
 - Arroyo Mocho
 - San Antonio Creek
 - Calaveras Creek
 - Arroyo Hondo
 - Wilderness

NORTH

0 1/2 1 1 1/2 2 2 1/2

SCALE: 1 IN = 2.5 MI



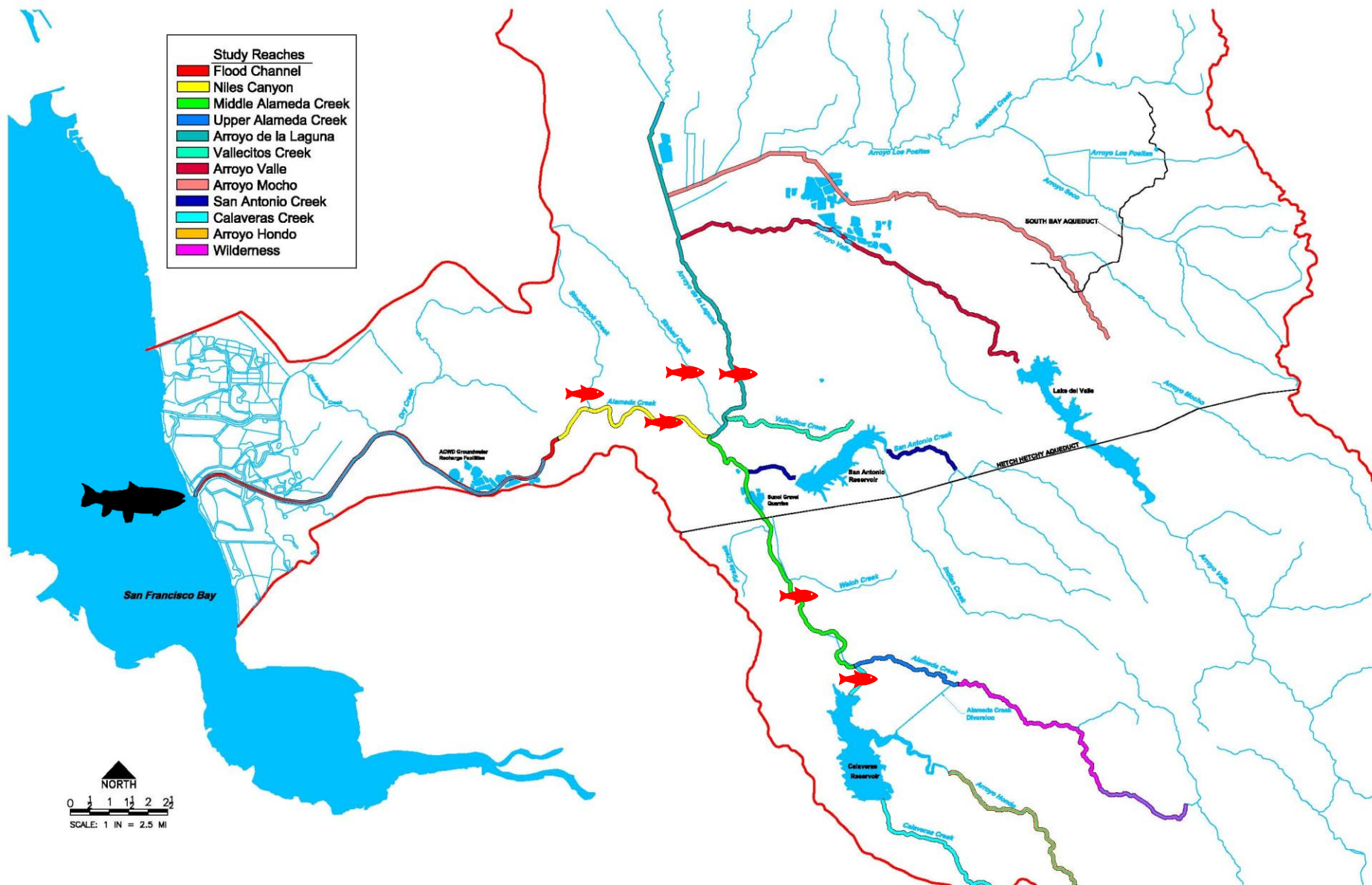


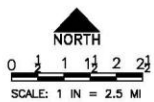
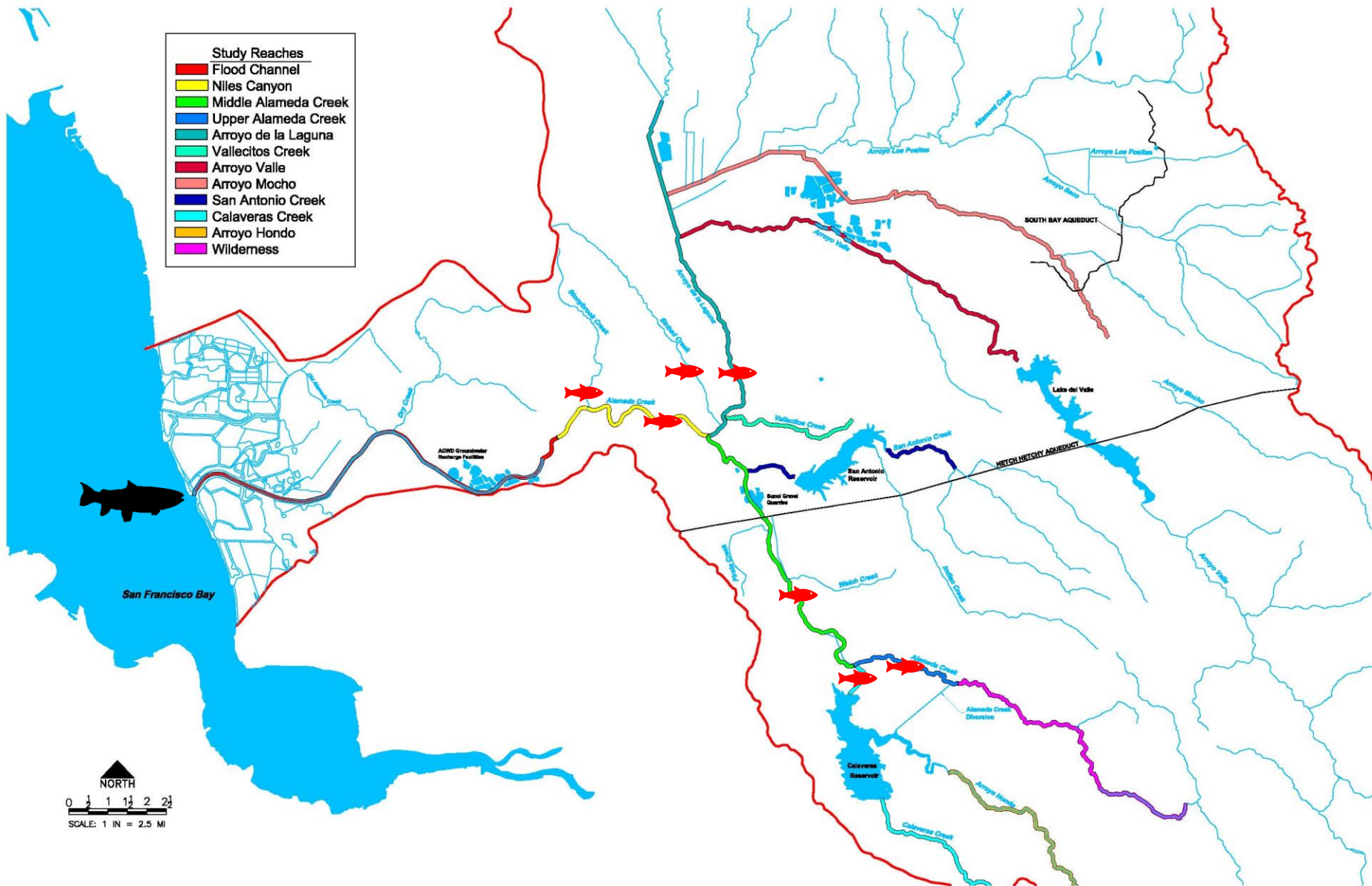
- Study Reaches**
- Flood Channel
 - Niles Canyon
 - Middle Alameda Creek
 - Upper Alameda Creek
 - Arroyo de la Laguna
 - Vallecitos Creek
 - Arroyo Valle
 - Arroyo Mocho
 - San Antonio Creek
 - Calaveras Creek
 - Arroyo Hondo
 - Wilderness

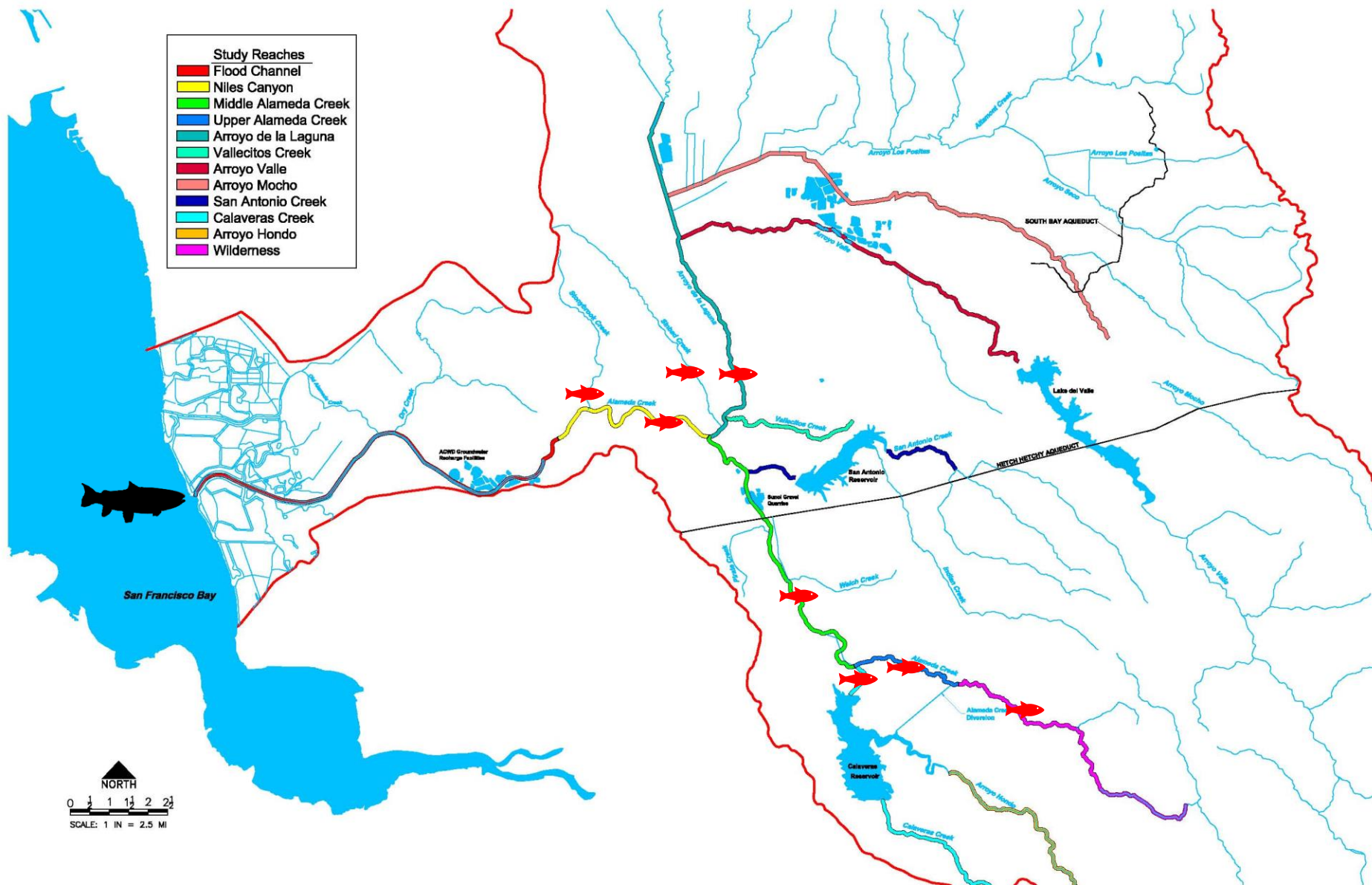
NORTH

0 1/2 1 1 1/2 2 2 1/2

SCALE: 1 IN = 2.5 MI











Chinook salmon at BART weir December 2022
Two dozen made it through new fish ladder



Pacific lamprey in new fish ladder, February 2023



Steelhead jumping at BART weir February 2019

www.alamedacreek.org



Steven Cochrane

Volunteer and Restoration Coordinator

steven@alamedacreek.org

Jeff Miller

Executive Director

jeff@alamedacreek.org