

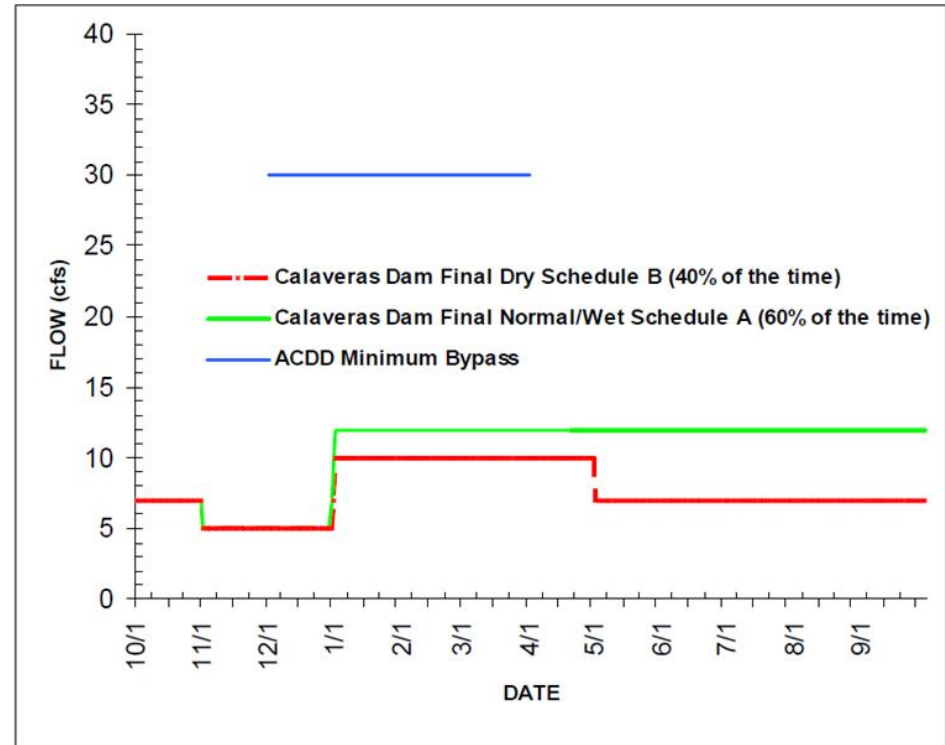
# Historic Calaveras Dam Water Releases

- 1925- February 2012
  - No release required
- March 2012- December 2018
  - 0.55 cfs minimum release required during new dam construction
- January 2019- present
  - Permit-required environmental release schedule



# Calaveras Dam Permit-required Release Schedule

- Minimum release range: 5-12 cfs
- Cumulative inflow from Arroyo Hondo decides water year (WY) type
- WY type is assessed at the end of December and at the end of April
- Release schedule designed to maximize spawning and rearing habitat for Steelhead



**Figure 1.** Hydrograph illustrating the minimum instream flow release schedules for Calaveras Dam and bypass flows for the ACDD.

# Calaveras Reservoir Environmental Release Valves

- Low Flow Release Between 5-12 cfs





# SFPUC Fisheries Monitoring

- Spawning Surveys (January- April)
- Out-migrant Fish Trapping (February- June)
- Bioassessment Surveys (June)
- Snorkel Surveys (August)
- Electrofishing (October)
- Water Quality and Temperature Monitoring
- Steelhead Migration Monitoring



# SFPUC Fisheries Monitoring

- Spawning Surveys (January- April)
- Out-migrant Fish Trapping (February- June)
- Bioassessment Surveys (June)
- Snorkel Surveys (August)
- Electrofishing (October)
- Water Quality and Temperature Monitoring
- Steelhead Migration Monitoring



# SFPUC Fisheries Monitoring

- Out-migrant Fish Trapping
  - Daily February through June

Rotary Screw Trap (RST)



Fyke Net



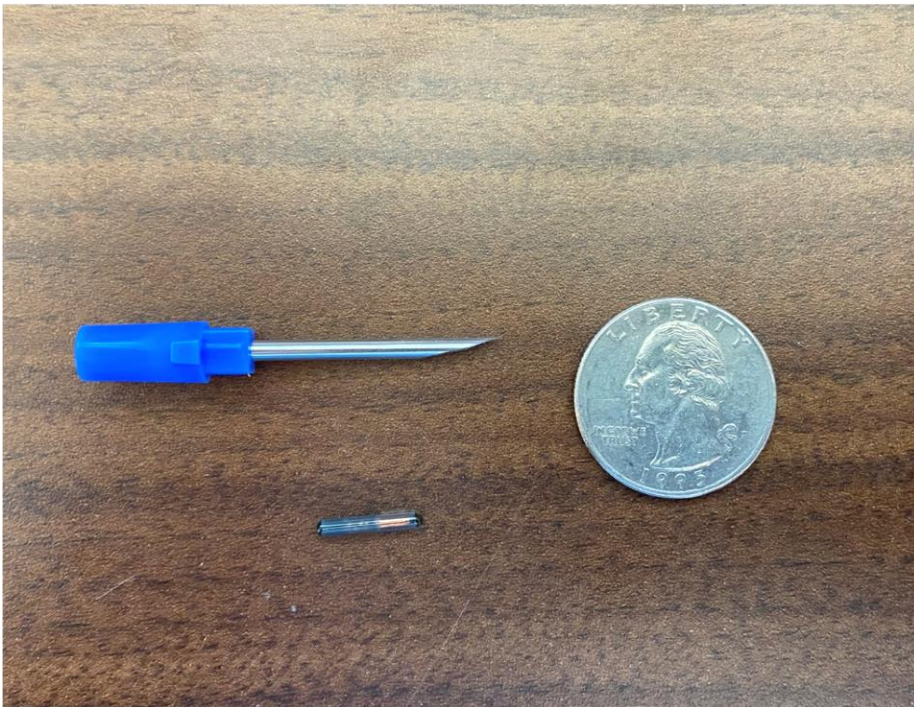


# SFPUC Fisheries Monitoring

- Electrofishing Surveys  
- October

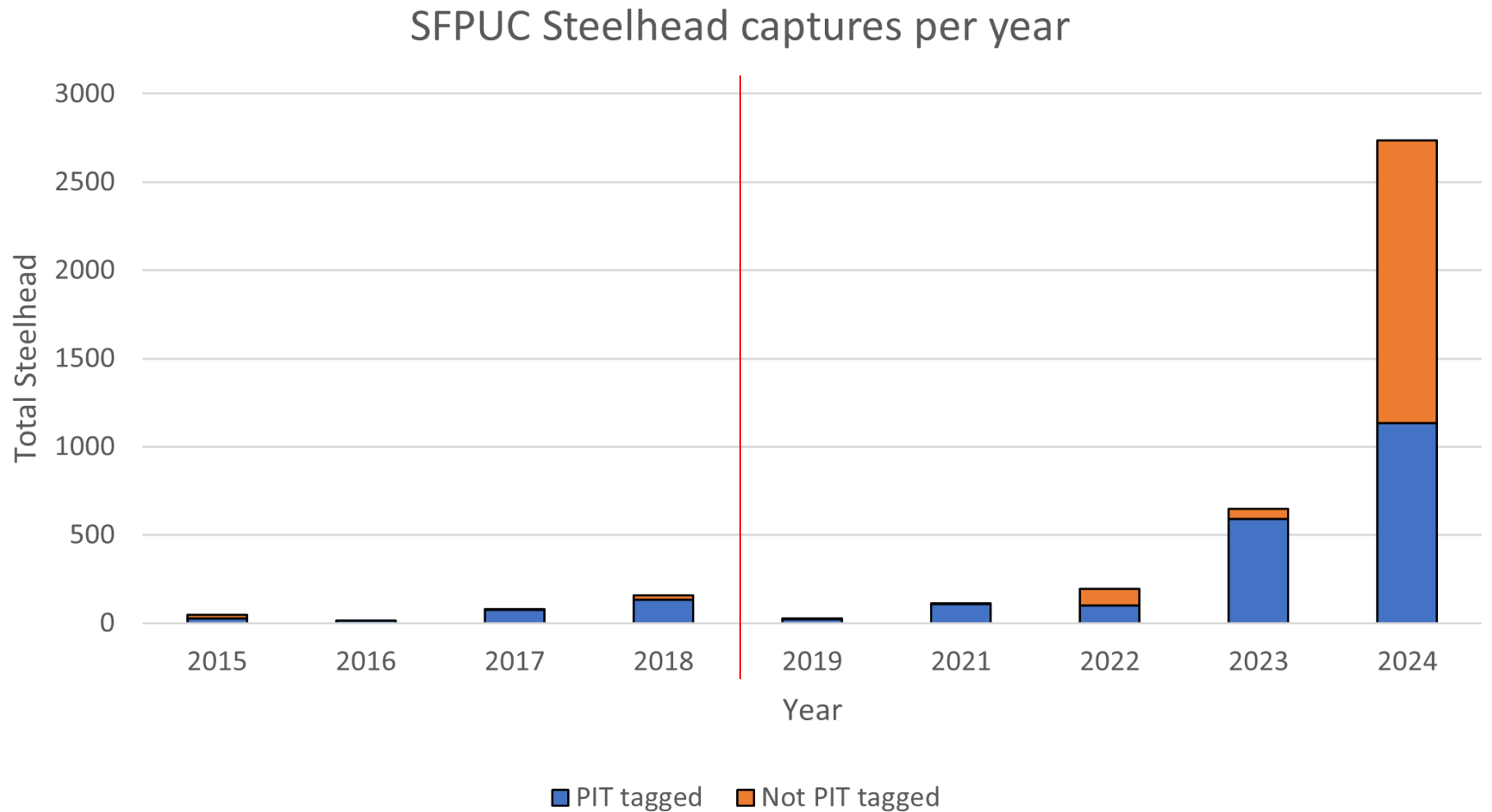


# Juvenile Steelhead Passive Integrated Transponder (PIT) Tagging

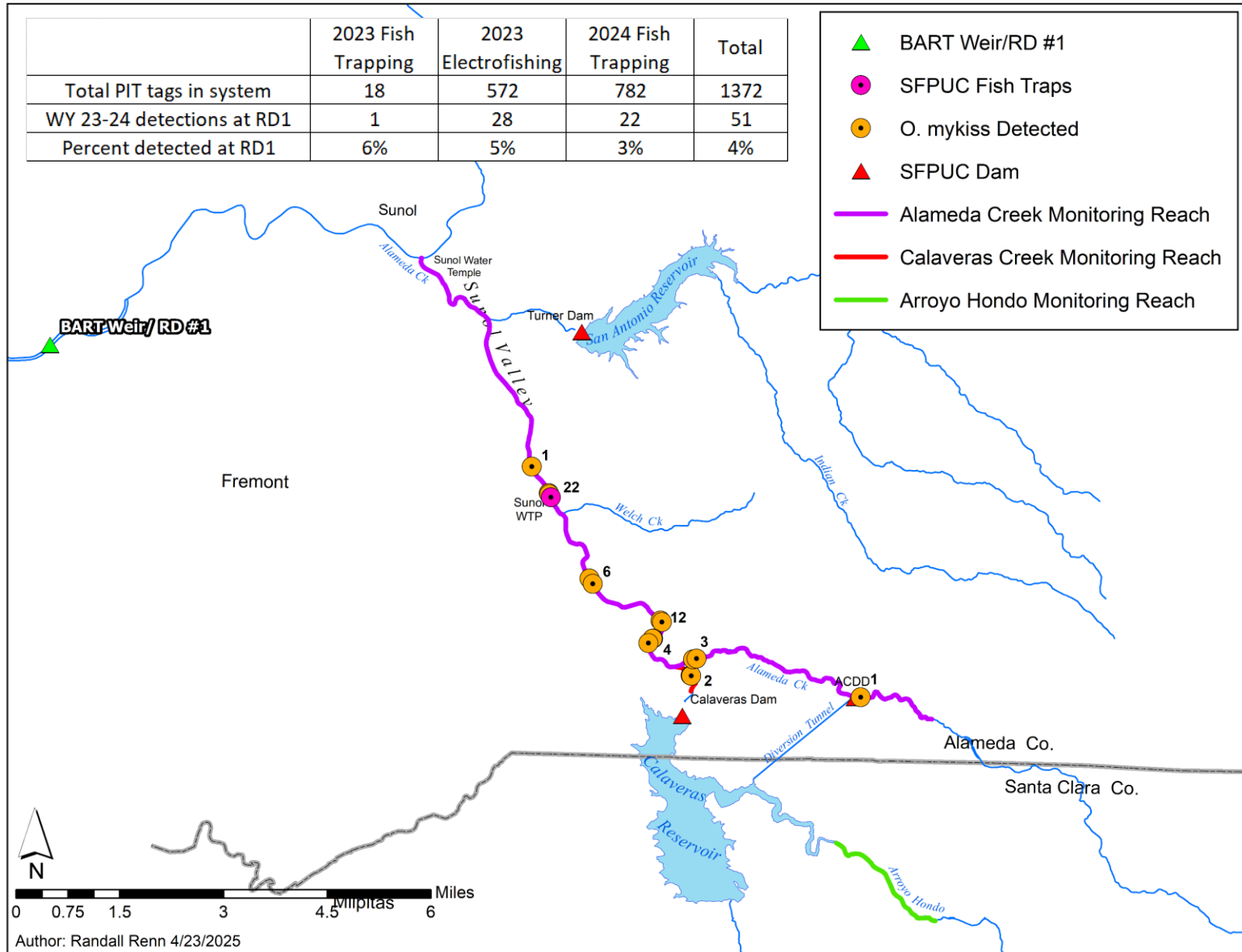




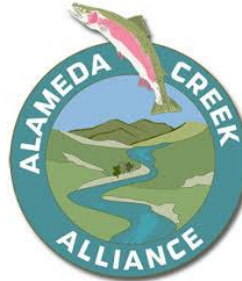
# SFPUC Steelhead Captures Per Year



# BART Weir/RD #1 Detections WY 23-24



# Teamwork and Collaboration



Services of the San Francisco  
Public Utilities Commission

