

How the SFPUC and ACWD Collaborate to Track Anadromous Steelhead in Alameda Creek

**Alameda Creek Watershed Forum
Shannon Center, Dublin, CA**

May 1, 2025

Scott Chenue, Supervising Biologist, SFPUC
Randall Renn, Biologist, SFPUC

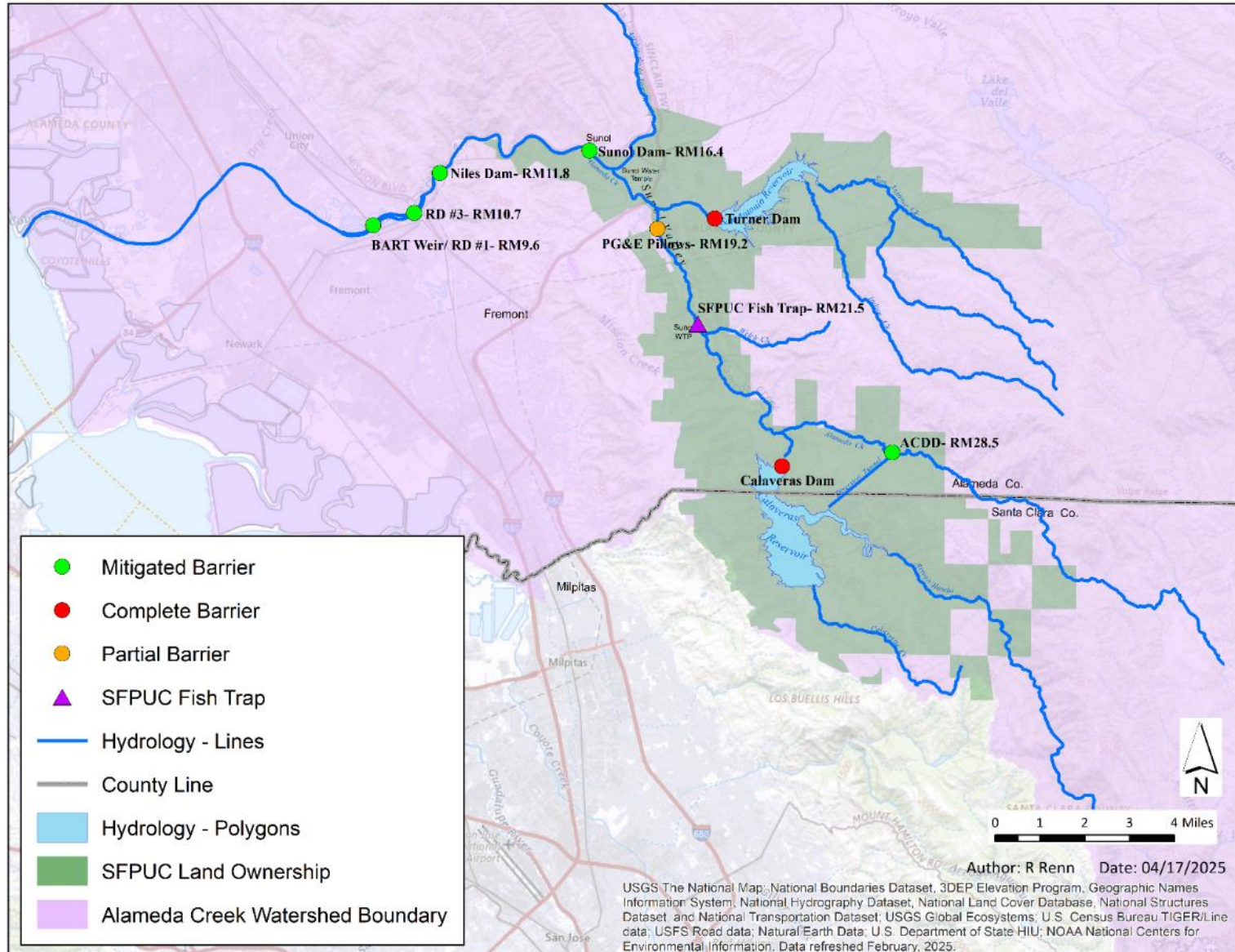
Kelsi Oshiro, Water Resources Engineer, ACWD
Andre Dextre, Water Supply Engineer, ACWD

Status of Fish Passage and Monitoring

- Overview of Alameda Creek Fish Passage
- SFPUC - Alameda Creek Diversion Dam Updates
- ACWD - Fish Ladder Operations and Water Stewardship (FLOWS) Program Updates
- SFPUC - Fisheries Monitoring Program Updates



Southern Alameda Creek Watershed



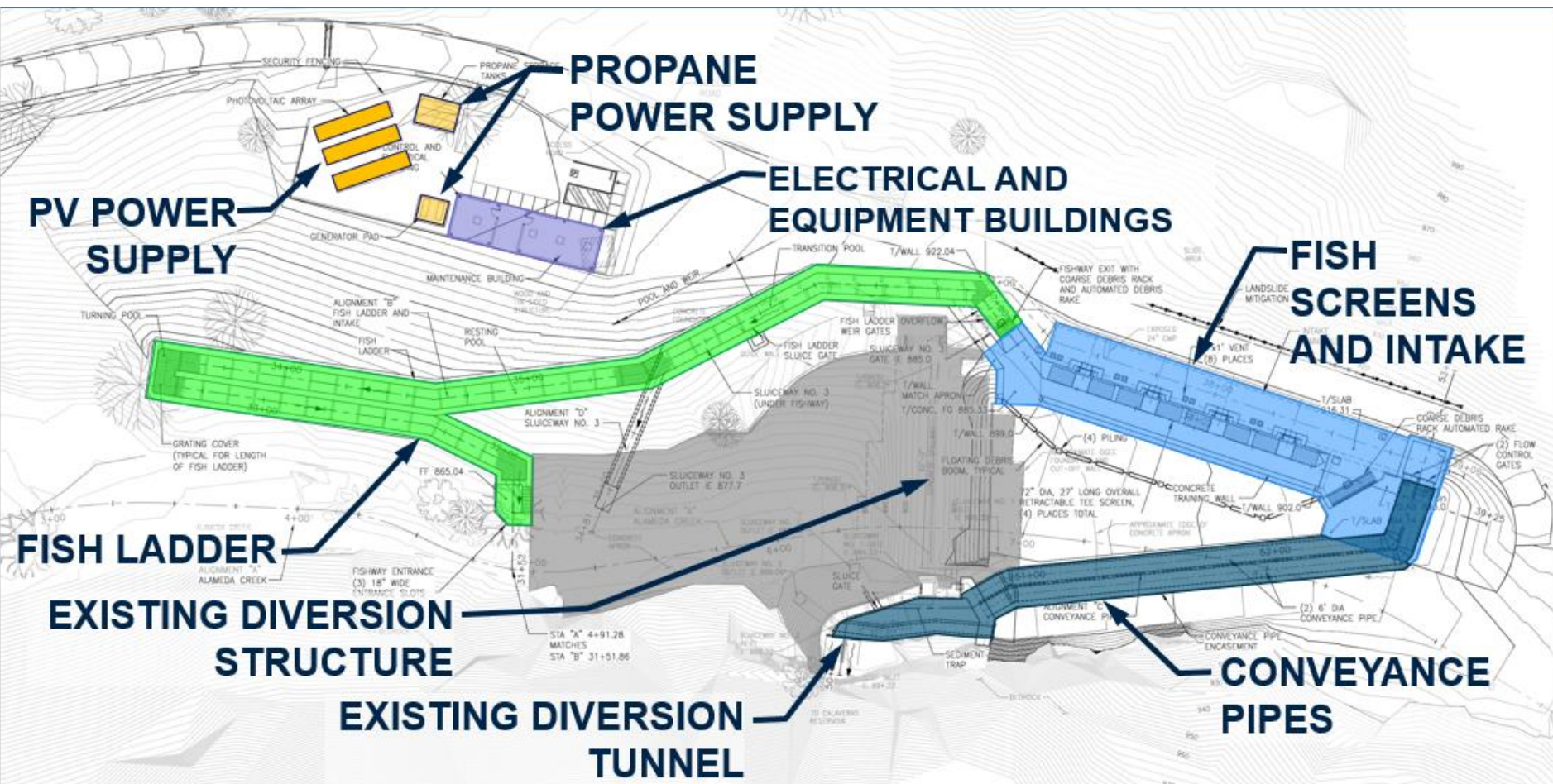
Alameda Creek Diversion Dam - 1931



Calaveras Dam Replacement Project: Fisheries Mitigation

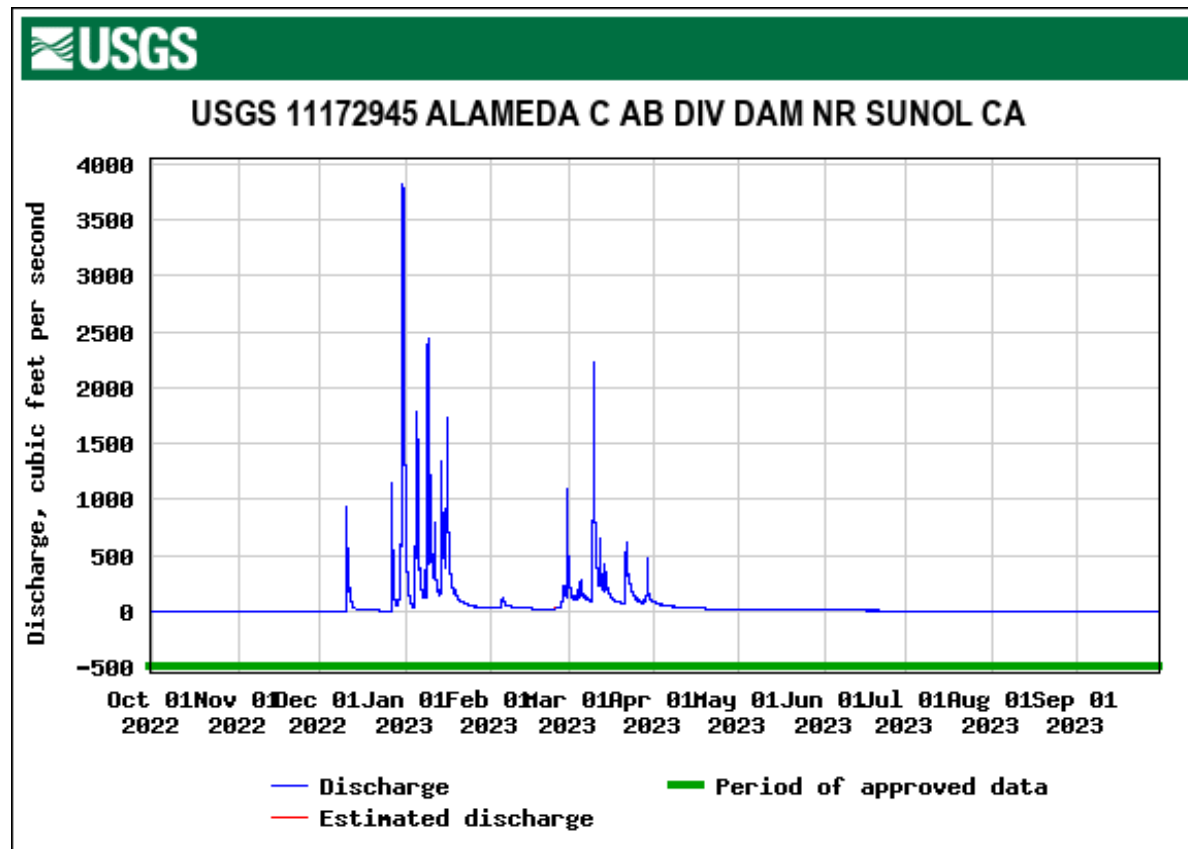
- Calaveras Dam Instream Flows (5-12cfs ; Jan 2019)
- Fisheries Monitoring Program (1998-present)
- ACDD Fish Ladder (2016-2019)
 - Vertical slot and pool and weir ladder (2019-2023)
 - Minimum Bypass (30cfs)
 - Diversion Season Limits (December-March)
 - Fish Screens
 - Reduced Diversion Flow Capacity (370cfs)
 - 4 Passive Integrated Transponder (PIT) Antennas

ACDD Fish Passage Project



Extreme Winter Storms of 2022-2023

- Flow peaked at 3,830cfs 10:00am 12/31/2022
- ACDD completely buried and non-operational
- Second highest flow on record (1995-2025)



Extreme Winter Storms of 2022-2023

ACDD Forebay Prior to Storms



ACDD Forebay After Storms



Sediment Excavation – Forebay and Screens – June-October 2024



Sediment Excavation Complete



Initial Sluicing – December 16, 2024



Forebay Sluicing – December 27, 2024



March 26, 2025



Next Steps Towards Recovery

- V-007 Primary Sluice Gate
- V-270 Secondary Sluice Gate
- Fish Passage ?
- Power System
- Fish Screens
- Conveyance System Sediment
- Reliability Upgrades