

Managing Watershed Lands for Resilience: Sunol Regional Wilderness

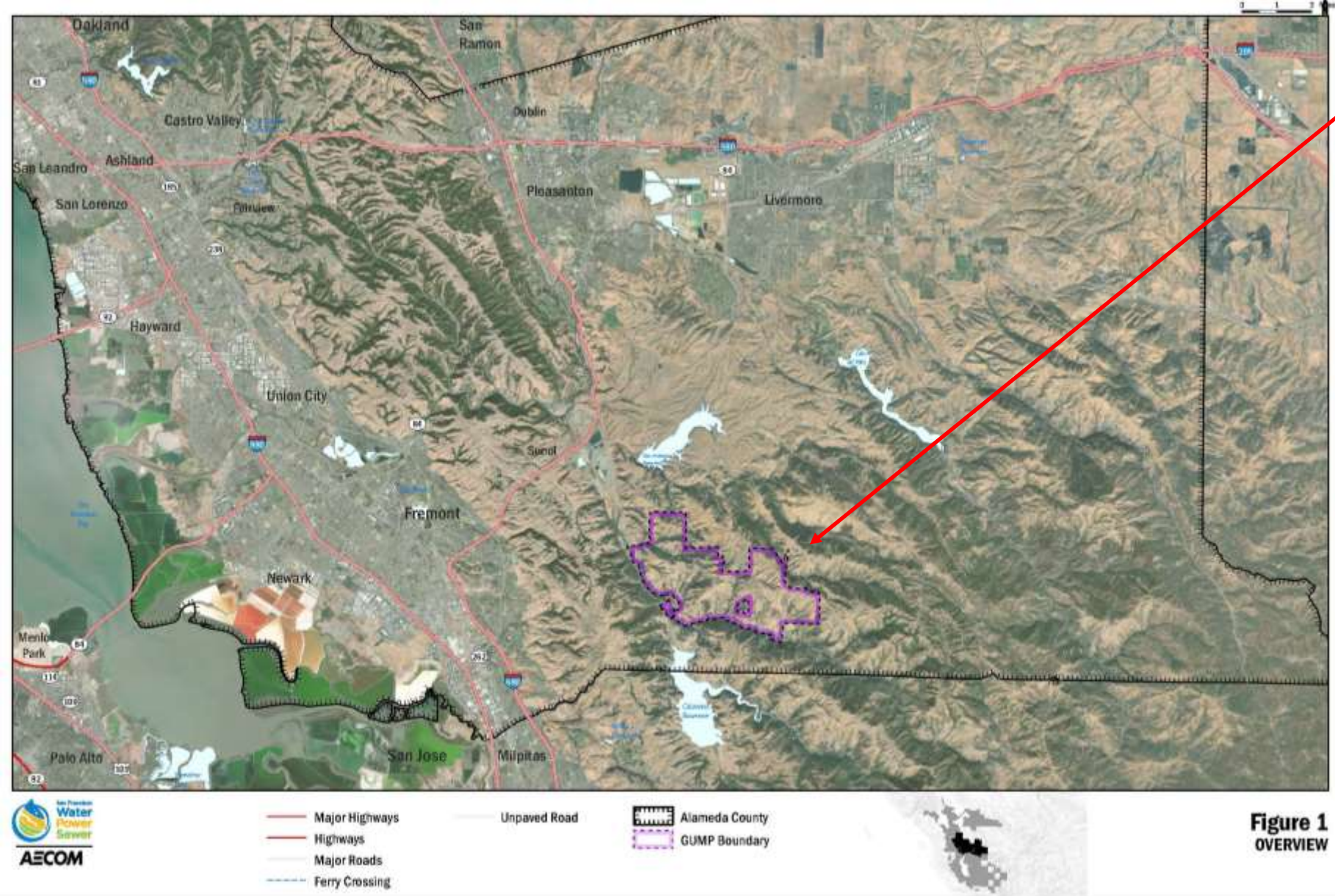
Alameda Confluence Conference, *October 2018*

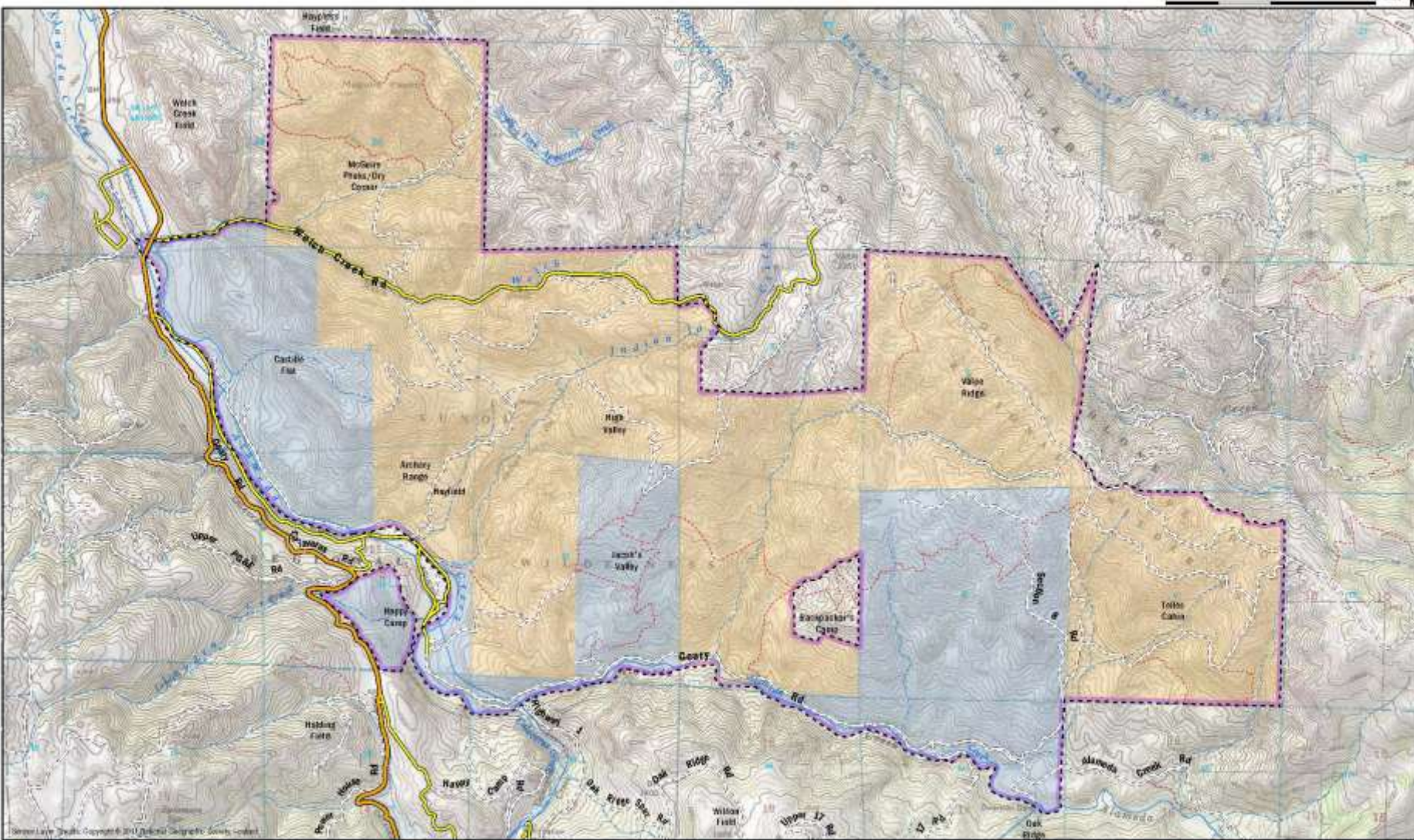


Beautiful Sunol



Where in the World?





- Stream
- Intermittent Stream
- Secondary Highway
- Paved Road
- Impaved Road
- Rail
- Federal Land Survey System, Section
- GUMP Boundary
- Ownership:
 - EBFPO
 - SPSLC

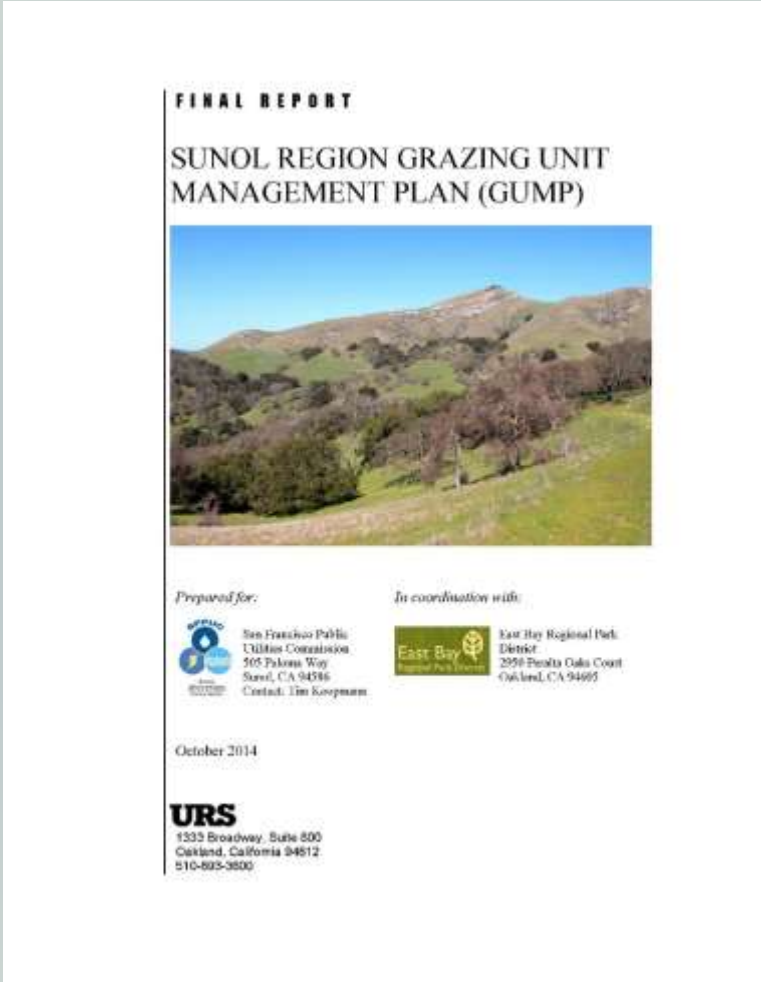
Figure 1
OVERVIEW
Grazing Unit Management Plan

Grazing Use Management Plan (GUMP)

- What is a GUMP?
- What is it for?



Partners



Why a GUMP?

- Codify shared **goals**
- **Continuity** of management
- Infrastructure **inventory**
- Rangeland **monitoring**
- One **tenant rancher**
- **Memorialize** information
- **One** guiding document
- Detailed **grazing system**



Goals of the GUMP



Goal 1: Functioning Biological Systems



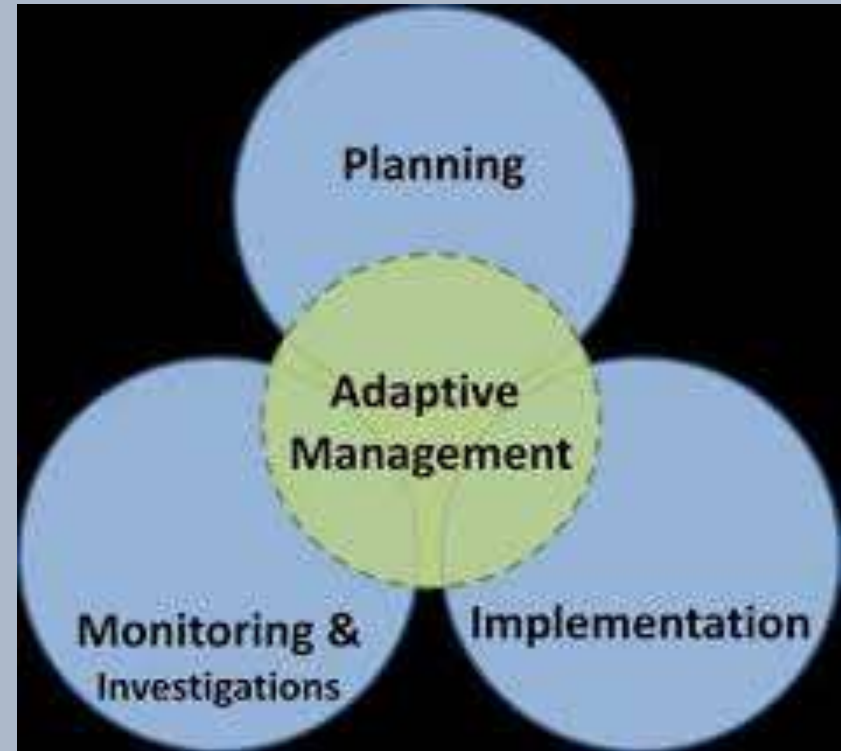
Goal 2: Water Quality



Goal 3: Recreation



Goal 4: Adaptive Management





Goal 5: Continuity of Management


- Staff and Rancher Turnover (retirements, generational change)
- One guiding document



FINAL REPORT
**SUNOL REGION GRAZING UNIT
MANAGEMENT PLAN (GUMP)**



Prepared for:
 San Francisco Public Utilities Commission
1515 Polk Street
San Francisco, CA 94109
Contact: Tim Koopmann

In coordination with:
 East Bay Regional Park District
3950 Paralta Oaks Court
Oakland, CA 94618

October 2014

URS
1000 Broadway, Suite 600
Oakland, California 94612
010-800-3600

Goal 6: Economically and Ecologically Viable Grazing



Photo credit: Lynn Huntsinger

Benefits of the GUMP

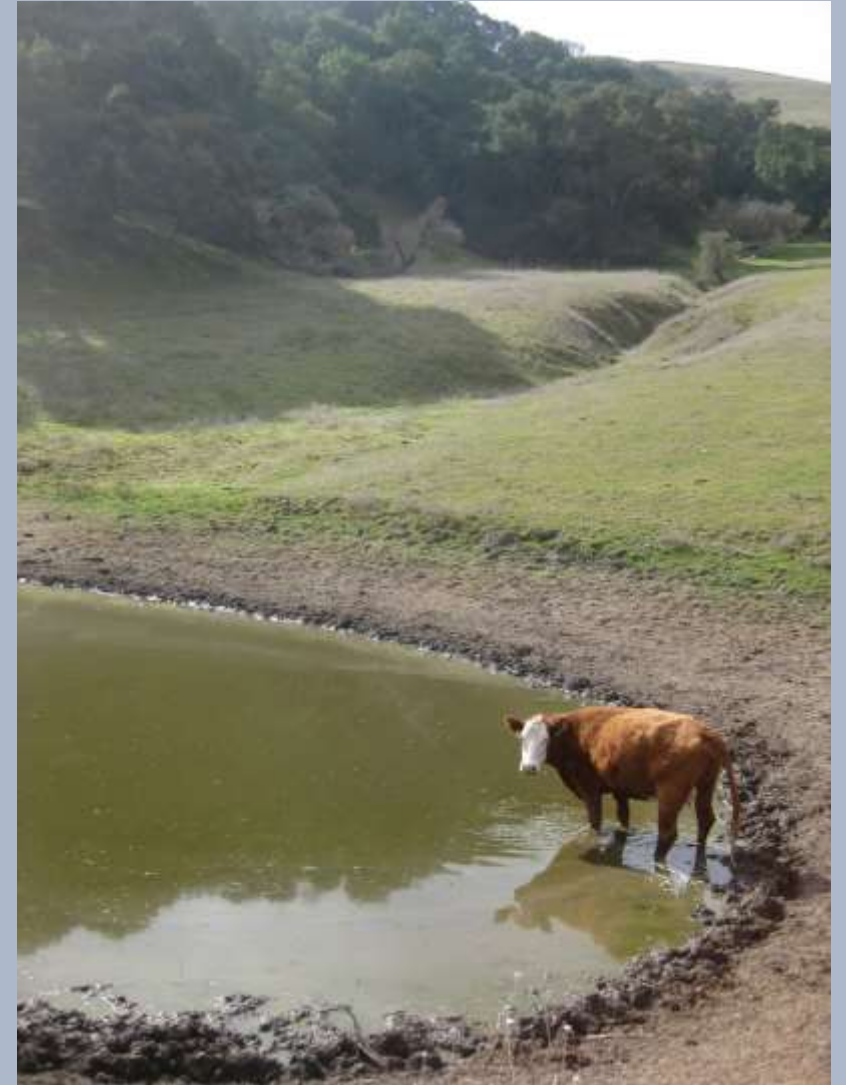
Alameda Confluence Conference, *October 2018*

- Reduce fuel loading



Benefits of the GUMP

- Support special-status species habitat



Benefits of the GUMP

- Support special status species habitat
- Support plant diversity



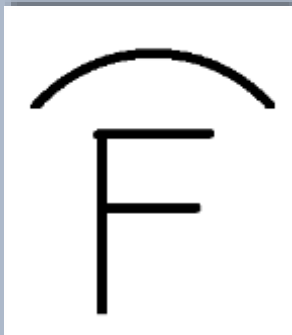
GUMP Projects

Current:

- Medusahead Control
- Rangeland Resilience- *off stream water developments and monitoring*

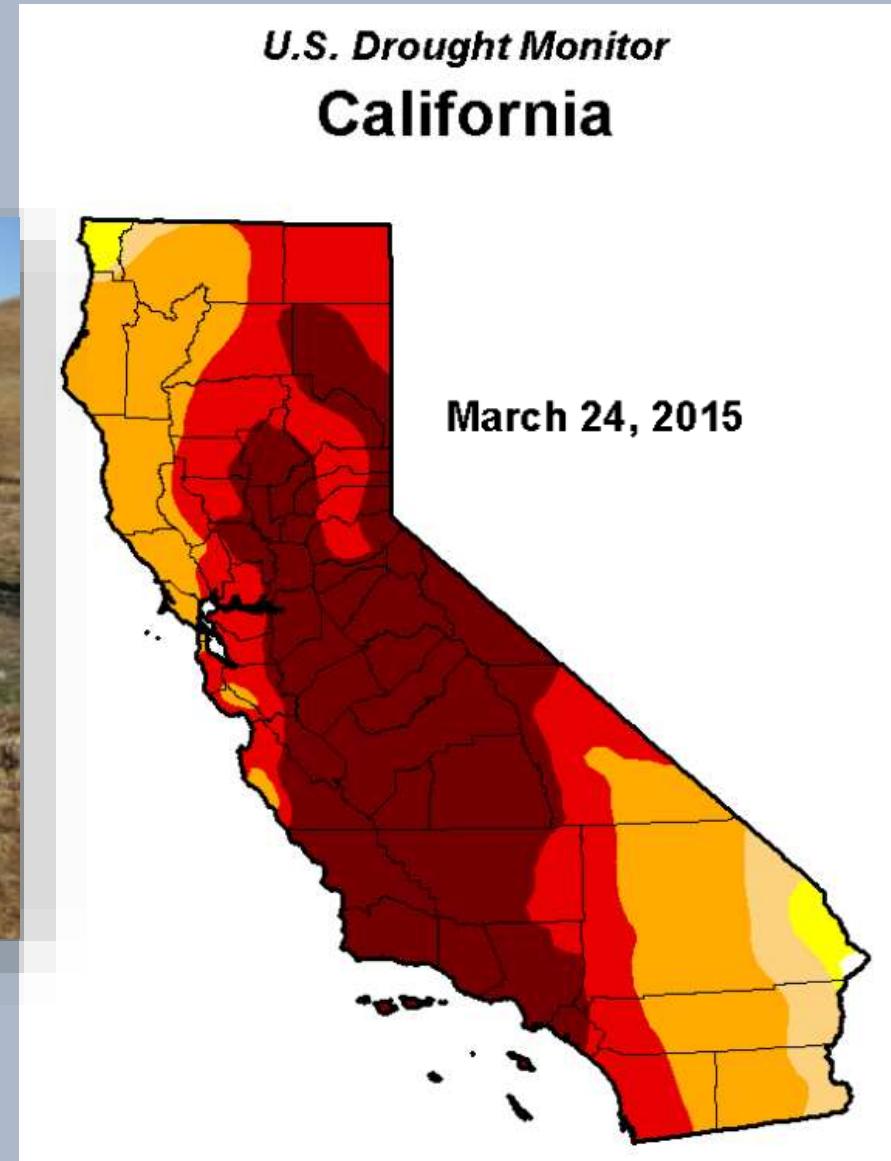


Rangeland Resilience Project



Rangeland Resilience: What, Why

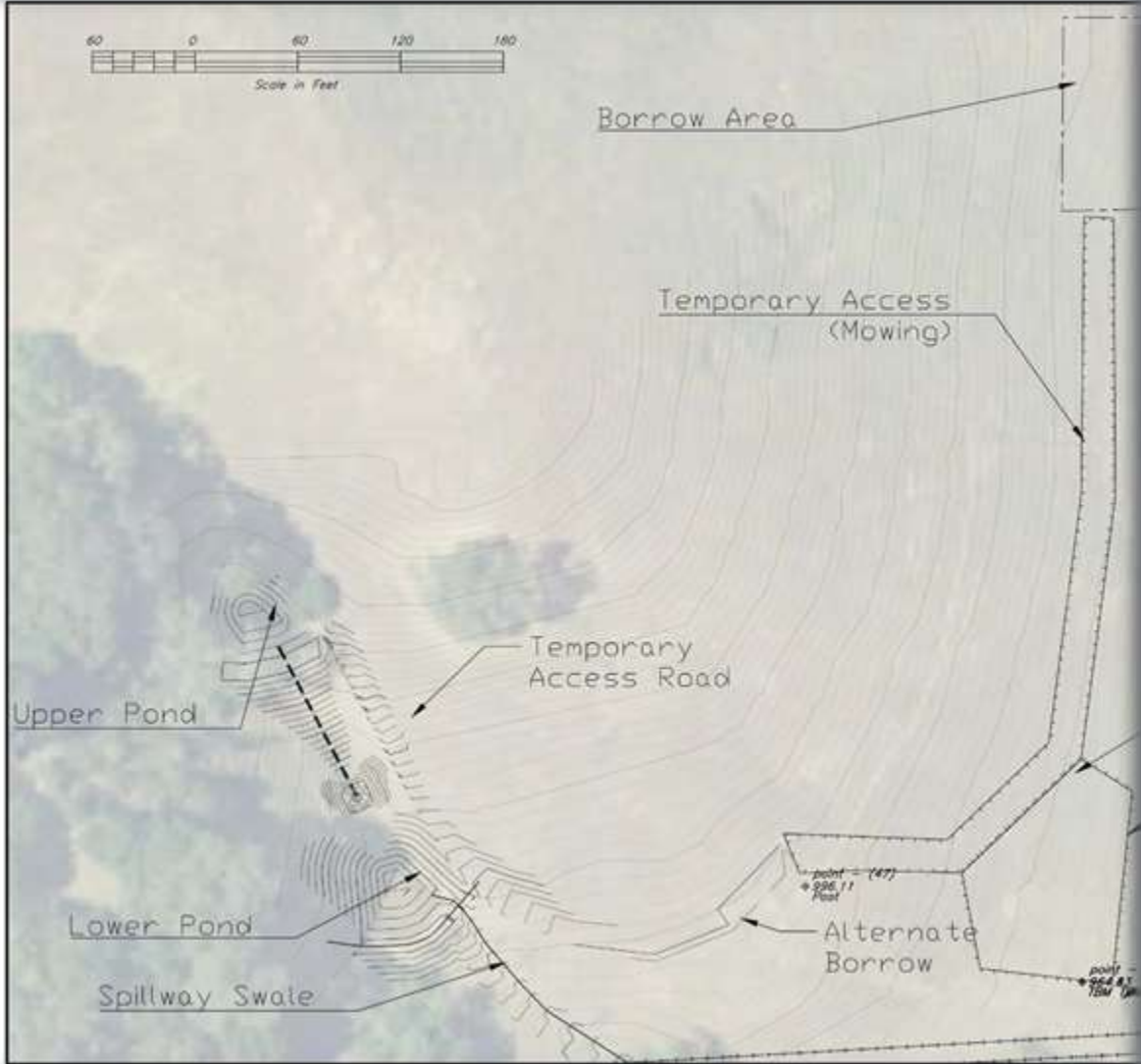
Alameda Confluence Conference, *October 2018*



Planning – A Team Effort



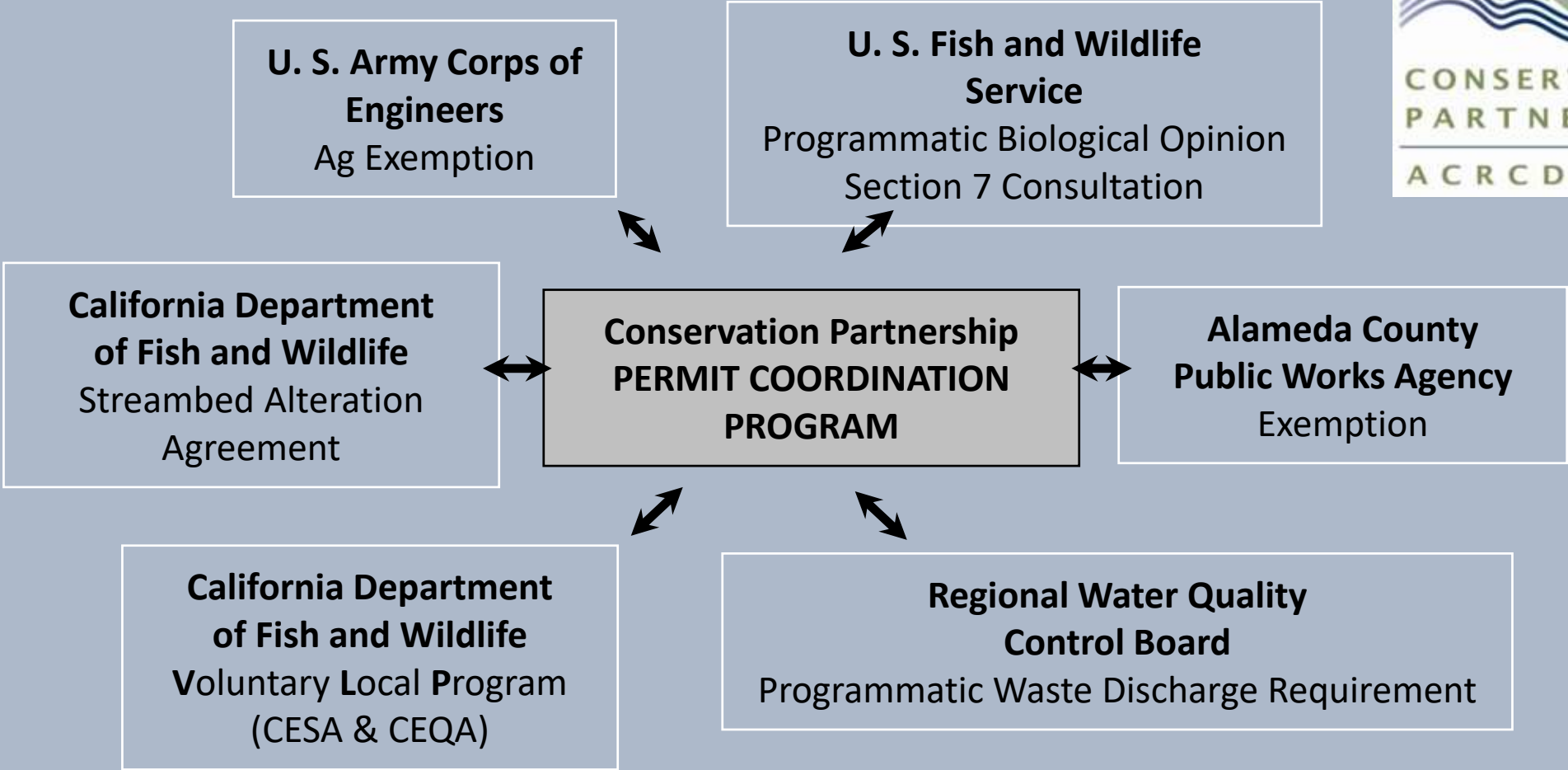
Planning – A Team Effort



Planning – A Team Effort



Planning – A Team Effort



2017 Accomplishments



2017 Accomplishments



Goals of the GUMP

- Functioning biological systems
- Water quality
- Positive recreational visitor experiences
- Adaptive management
- Communications and continuity of management
- Economically and ecologically sustainable grazing operation



Goals of the GUMP

- **Functioning biological systems**
- **Water quality**
- **Positive recreational visitor experiences**
- **Adaptive management**
- **Communications and continuity of management**
- **Economically and ecologically sustainable grazing operation**



Goals of the GUMP

- Functioning biological systems
- Water quality
- Positive recreational visitor experiences
- Adaptive management
- Communications and continuity of management
- Economically and ecologically sustainable grazing operation



Goals of the GUMP

- Functioning biological systems
- Water quality
- Positive recreational visitor experiences
- Adaptive management
- Communications and continuity of management
- Economically and ecologically sustainable grazing operation



Goals of the GUMP

- Functioning biological systems
- Water quality
- Positive recreational visitor experiences
- Adaptive management
- Communications and continuity of management
- Economically and ecologically sustainable grazing operation

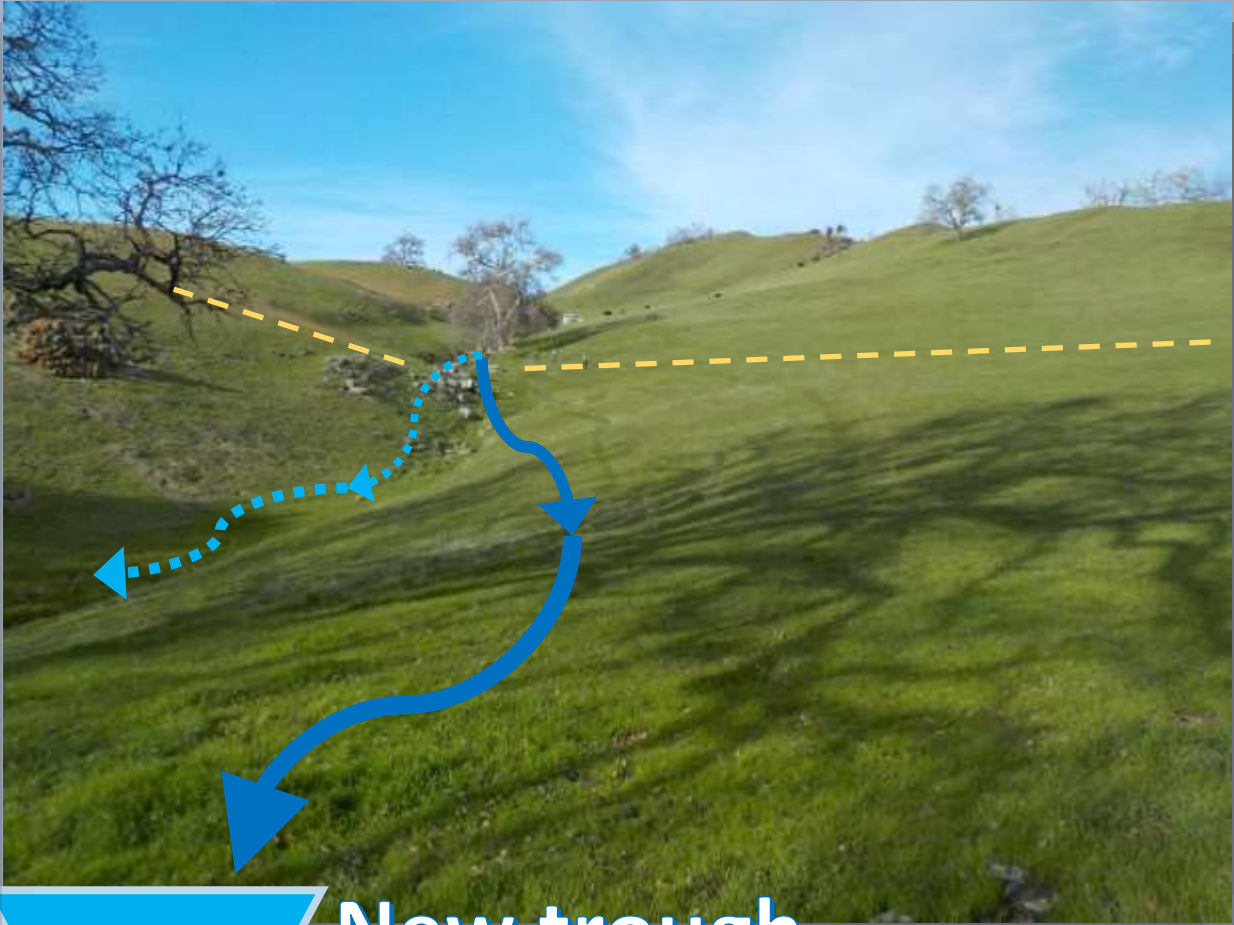


Spring Projects





Spring Projects



Pond Projects



Pond Projects



Pond Projects



Monitoring Effectiveness



Sunol Rangeland Resiliency Project
2016 and 2017 Baseline Vegetation
Condition Summary
February 9, 2018



Thank you!

SFPUC

Tim Koopmann
Neal Fujita
Robin Dakin
Clayton Koopmann

ACRCD & NRCS

Ian Howell
Leslie Koenig
Jackie Charbonneau
Katie Bergmann

EBRPD

Denise Defreese
Gordon Willey
Jose Escobar
Paul Miller
David Amme

Fields Livestock

Russ Fields
Bartley Seever
Ronnie Seever

AECOM

Dina Robertson
Julie Garren
Otto Alvarez

Coastal Conservancy

Matt Gerhart
Avra Heller
Kelly Malinowski

